

Gonzen Alfredo Häberli

Openness factor 4%
Trevira CS woolen mélange look



kvadrat

Specification details

Openness factor	4%
Composition	100% Trevira CS
Fabric width	300 cm (118 inches)
Weight	180 g/m ²
Thickness	0.5 mm
IR emissivity	0.90
Light fastness	6-7 (ISO105-B02)
Fire tests	BS 5867 part 2 type B, DIN 4102 B1, EN 13773 class 1, IMO FTP code 2010: part 7, NF P 92 507 M1, NFPA 701
Environment	GREENGUARD Gold, Environmental Product Declaration (EPD), Health Product Declaration (HPD). Comply with REACH. PVC free.

Technical details

Colour	Optical properties acc. to EN 14500:2021 and EN 14501:2021					
	Rs (%)	Ts (%)	Tv (%)	Tuv (%)	Ra	Glare control rating
100	50	45	45	21	97	0
120	26	25	23	15	98	0
160	13	14	12	10	98	0
190	4	4	4	4	98	1
220	47	34	32	12	85	0
260	24	18	14	11	93	0
560	19	12	5	5	77	1
760	14	10	5	5	93	1

Colour	Solar control double glazing G			Solar control triple glazing I		
	gtot/SHGC (%)	Utot-value (W/m ² K)	Tv, tot (%)	gtot/SHGC (%)	Utot-value (W/m ² K)	Tv, tot (%)
100	19	0.84	36	20	0.56	34
120	25	0.84	17	25	0.56	16
160	28	0.84	8	27	0.56	8
190	30	0.84	2	28	0.56	2
220	21	0.84	26	21	0.56	24
260	27	0.84	10	26	0.56	9
560	29	0.84	4	28	0.56	3
760	28	0.84	4	28	0.56	3

Rs: Solar reflection | **Ts:** Solar transmission | **As:** Solar absorption calculation: $100 - Rs - Ts = As$

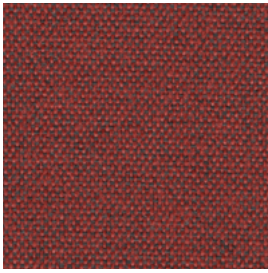
Tv: Visual light transmission | **Tuv:** UV transmission | **Ra:** Colour rendering index

Glazing G: $g=33\%$ / $U=1.0$ / $Tv=70\%$ (acc. to EN14501: 2021) | **Glazing I:** $g=31\%$ / $U=0.6$ / $Tv=64\%$ (with ref. panes acc. to EN 14501:2021)

gtot/SHGC: Solar heat gain through total fenestration | **Utot:** Thermal heat loss (or gain) through total fenestration

Tv, tot: Total light transmission through total fenestration

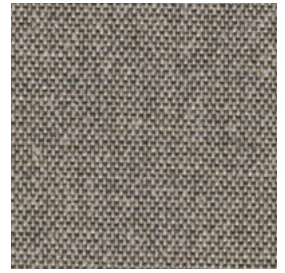
Gonzen



560



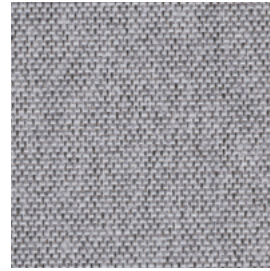
220



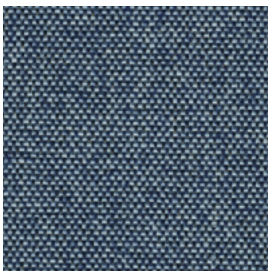
260



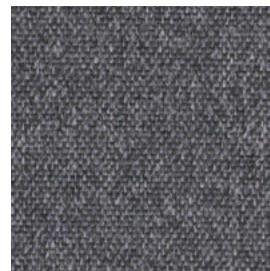
100



120



760



160



190



Gonzen

Design: Alfredo Häberli

DK

Anvendelse Rullegardin.

Beskrivelse 100% Trevira CS. Bredde 300 cm. Vægt 180 g/m². Tykkelse 0.5 mm. Garnfarvet. Nuanceforskel kan forekomme.

Lysægtighed 6-7 (ISO 105-B02).

Flammesikring BS 5867 part 2 type B. DIN 4102 B1. EN 13 773 class 1. IMO FTP Code 2010 Part 7. NF P 92 507 M1. NFPA 701. (Kopi af testrapport kan rekvireres).

Vedligeholdelse Se ISO symboler. Rengør med en tør eller opvredet klud. Brug kun rent vand. Kan også børstes eller støvsuges (nedsat sug) med børste mundstykke. Ved kraftigere tilsmudsning anbefales det at kontakte professionel renseri.

UK

Application Roller blind.

Description 100% Trevira CS. Width 300 cm (118 inches). Weight 180 g/m². Thickness 0.5 mm. Yarn dyed. Colour differences may occur.

Lightfastness 6-7 (ISO 105-B02).

Flame resistance BS 5867 part 2 type B. DIN 4102 B1. EN 13 773 class 1. IMO FTP Code 2010 Part 7. NF P 92 507 M1. NFPA 701. (Copy of test report available).

Care Please see the ISO symbols. Clean with a dry or moist wrung cloth. Only use clean water. Can also be brushed or carefully vacuumed (reduce suction power) with a brush nozzle. In case of considerable staining, we recommend contacting a professional dry cleaner.

DE

Anwendungsbereich Rollos.

Beschreibung 100% Trevira CS. Breite 300 cm. Gewicht 180 g/m². Dicke 0.5 mm. Garngefärbt. Farbunterschiede können vorkommen.

Lichtechtheit 6-7 (ISO 105-B02).

Flammschutz BS 5867 part 2 type B. DIN 4102 B1. EN 13 773 class 1. IMO FTP Code 2010 Part 7. NF P 92 507 M1. NFPA 701. (Testbericht verfügbar).

Pflege Siehe ISO Pflegesymbole. Mit einem trockenen oder feuchten, ausgedrückten Tuch reinigen. Nur sauberes Wasser verwenden. Reinigung durch vorsichtiges Abbürsten oder saugen mit Bürstenaufsatz und reduzierter Leistung möglich. Bei starker Verschmutzung empfehlen wir einen professionellen Reinigungsdienst.

NL

Toepassing Rolgordijn.

Omschrijving 100% Trevira CS. Breedte 300 cm. Gewicht 180 g/m². Dikte 0.5 mm. Garengeverfd. Kleurverschillen kunnen optreden.

Lichtechtheid 6-7 (ISO 105-B02).

Brandwerendheid BS 5867 part 2 type B. DIN 4102 B1. EN 13 773 class 1. IMO FTP Code 2010 Part 7. NF P 92 507 M1. NFPA 701. (Op aanvraag sturen wij u graag een kopie van het testrapport toe).

Onderhoud Zie de ISO symbolen. Schoon deppen met een droge of goed uitgewrongen, vochtige doek. Alleen schoon water gebruiken. Kan ook schoongemaakt worden door middel van een borstel of een stofzuiger met borstelstuk op halve kracht. In het geval van serieuze vlekvorming, raden we aan contact op te nemen met een professionele reiniger.

FR

Domaine d'utilisation Store.

Description 100% Trevira CS. Largeur 300 cm. Poids 180 g/m². Épaisseur 0.5 mm. Teinture sur fil. Ecart des coloris possibles.

Résistance à la lumière 6-7 (ISO 105-B02).

Normes au feu BS 5867 part 2 type B. DIN 4102 B1. EN 13 773 class 1. IMO FTP Code 2010 Part 7. NF P 92 507 M1. NFPA 701. (La copie du compte rendu des tests est disponible sur demande).

Entretien Voir les symboles ISO. Nettoyez avec un chiffon sec ou chiffon humide bien essoré. Utilisez uniquement de l'eau propre. Le tissu peut aussi être brossé ou aspiré avec soin (puissance d'aspiration réduite) avec un embout en forme de brosse. Dans le cas où le tissu a été fortement taché, nous suggérons de contacter un pressing professionnel.

IT

Destinazione d'uso Tende a rullo.

Caratteristiche 100% Trevira CS. Altezza 300 cm. Peso 180 g/m². Spessore 0.5 mm. Tinto in filo. Possibili differenze per colore.

Resistenza alla luce 6-7 (ISO 105-B02).

Ignifugazione BS 5867 part 2 type B. DIN 4102 B1. EN 13 773 class 1. IMO FTP Code 2010 Part 7. NF P 92 507 M1. NFPA 701. (Disponibile copia del test).

Manutenzione Per favore seguire simboli ISO. Pulire con un panno asciutto o umido strizzato. Utilizzare solo acqua pulita. Può anche essere spazzolato oppure accuratamente aspirato (ridurre la potenza di aspirazione) con un ugello a spazzola. In caso di macchie considerevoli, si consiglia di contattare un lavasecco professionale.

ES

Aplicación Estor.

Descripción 100% Trevira CS. Anchura 300 cm. Peso 180 g/m². Grosor 0.5 mm. Teñido en hilo. Posibles variaciones de color.

Resistencia a la luz 6-7 (ISO 105-B02).

Resistencia al fuego BS 5867 part 2 type B. DIN 4102 B1. EN 13 773 class 1. IMO FTP Code 2010 Part 7. NF P 92 507 M1. NFPA 701. (Copia del informe de ensayos disponible).

Limpieza Consulte los símbolos ISO. Limpiar con un paño seco o ligeramente humedecido. Utilizar únicamente agua. También se puede cepillar o aspirar con cuidado (baja intensidad de succión) con una boquilla de cepillo. En caso de manchas considerables, recomendamos contactar con un profesional de limpieza.

SE

Användning Rullgardin.

Beskrivning 100% Trevira CS. Bredd 300 cm. Vikt 180 g/m². Tjocklek 0.5 mm. Garnfärgad. Viss nyansskillnad kan förekomma.

Ljushärdighet 6-7 (ISO 105-B02).

Flammskydd BS 5867 part 2 type B. DIN 4102 B1. EN 13 773 class 1. IMO FTP Code 2010 Part 7. NF P 92 507 M1. NFPA 701. (Kopia av testrapport finns tillgänglig vid förfrågan).

Underhåll Se ISO symboler. Rengör med en torr eller fuktad trasa. Använd endast rent vatten. Kan även borstas eller försiktigt dammsugas med ett borstmunstycke. I händelse av fläckar rekommenderar vi att du lämnar in rullgardinen till kemtvätt.

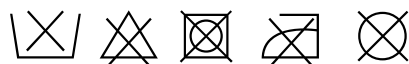
ZH

产品应用 遮光卷帘。

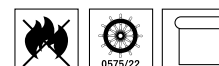
产品详情 100% 德国阻燃丝。幅宽：300厘米。克重：180克/平方米。厚度：0.5毫米。色织。可能出现色差。

日晒色牢度 英国标准BS 5867 第2部分B级，德国标准DIN 4102 B1，欧洲标准EN 13773 1级，国际海事组织标准 IMO FTP Code 2010 第7部分，法国标准 NF P 92 507 M1，美国标准NFPA 701。（可提供检测报告副本）。

保养须知 请参照ISO标识。用干布或拧干的湿布清洁。只可用清水。也可用毛刷或毛刷喷嘴（减少吸力）小心清理。如脏污较严重，建议联系专业干洗服务。



Contact and further information kvadrat.dk



5 year warranty

Alfredo Häberli

Alfredo Häberli was born in Buenos Aires, Argentina, in 1964. He moved to Switzerland in 1977 where he completed his training as industrial designer at Höhere Schule für Gestaltung in Zürich in 1991.

He started his own studio in 1991 and today boasts a versatile portfolio comprising exhibition concepts and design of industrially produced everyday articles and even architectural projects and technically sophisticated pieces of furniture.

Gonzen

Gonzen by Alfredo Häberli has a sophisticated woollen expression, reminiscent of fine tailoring. It offers a semi-open view outside and gives warm atmosphere to the room. Colours range from neutrals to warm and indigo tones.