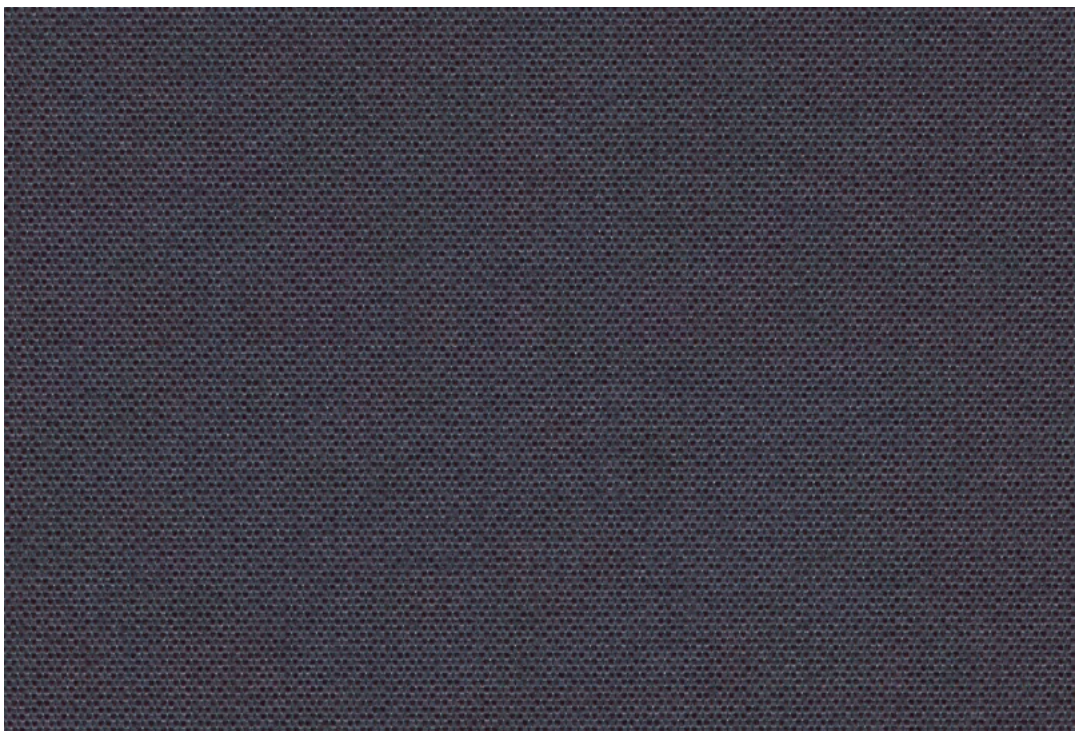


Apo Ronan and Erwan Bouroullec

Openness factor 2%
Solar reflection 64%
Acoustic performance 0.40 / Class D



Specification details

Openness factor	2%
Composition	100% Trevira CS, aluminium backing
Fabric width	240 cm (94.5 inches)
Weight	210 g/m ²
Thickness	0.40 mm
IR emissivity metal side	0.32
Light fastness	Interior 4-7, Exterior 7 (ISO105-B02)
Fire tests	EN 13501-1 (B-s1, d0), BS 5867 part 2 type B, DIN 4102 B1, NFPA 701, GB 8624 B1, GB 50222 B1, JIS L 1091 A-1 D, EN 13773 class 1
Environment	GREENGUARD Gold, STANDARD 100 Class IV by OEKO-TEX®, Environmental Product Declaration (EPD), Health Product Declaration (HPD). Comply with REACH and RoHS2. Halogen free, Phthalate free, Formaldehyde free, Antimicrobials free, PVC free.
Sound absorption	0.40 / Class D

Technical details

Colour	Optical properties acc. to EN 14500:2021 and EN 14501:2021					
	Rs (%)	Ts (%)	Tv (%)	Tuv (%)	Ra	Glare control rating
101	64	6	6	6	100	3
131	64	5	5	4	98	4
161	64	5	4	4	98	4
191	64	5	4	4	98	4
201	64	6	5	5	98	4
431	64	5	5	4	91	4
601	64	5	5	5	98	4
701	64	6	6	5	97	3

Colour	Solar control double glazing G			Solar control triple glazing I		
	gtot/SHGC (%)	Utot-value (W/m ² K)	Tv, tot (%)	gtot/SHGC (%)	Utot-value (W/m ² K)	Tv, tot (%)
101	15	0.76	5	16	0.51	5
131	15	0.76	4	16	0.51	4
161	15	0.76	3	16	0.51	3
191	15	0.76	3	16	0.51	3
201	15	0.76	4	16	0.51	4
431	15	0.76	4	16	0.51	4
601	15	0.76	4	16	0.51	4
701	15	0.76	5	16	0.51	5

Rs: Solar reflection | **Ts:** Solar transmission | **As:** Solar absorption calculation: $100 - Rs - Ts = As$

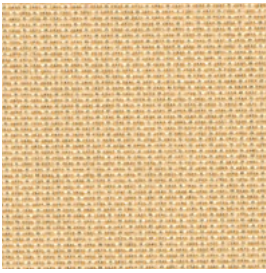
Tv: Visual light transmission | **Tuv:** UV transmission | **Ra:** Colour rendering index

Glazing G: $g=33\%$ / $U=1.0$ / $Tv=70\%$ (acc. to EN14501: 2021) | **Glazing I:** $g=31\%$ / $U=0.6$ / $Tv=64\%$ (with ref. panes acc. to EN 14501:2021)

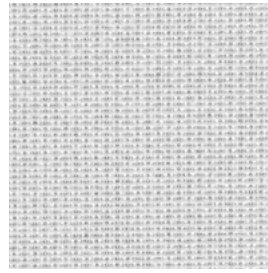
gtot/SHGC: Solar heat gain through total fenestration | **Utot:** Thermal heat loss (or gain) through total fenestration

Tv, tot: Total light transmission through total fenestration

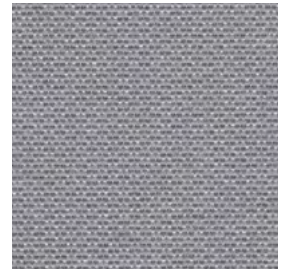
Apo



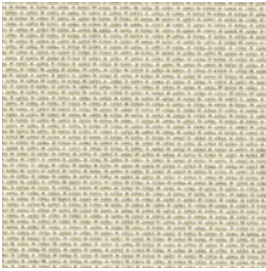
431



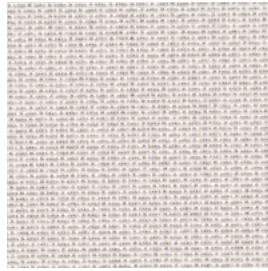
101



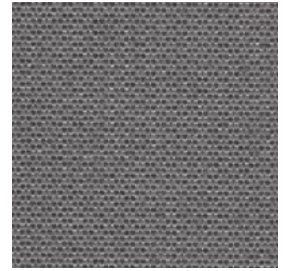
131



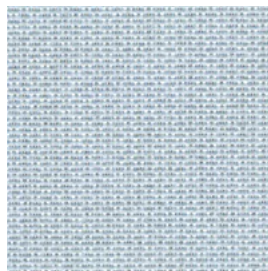
201



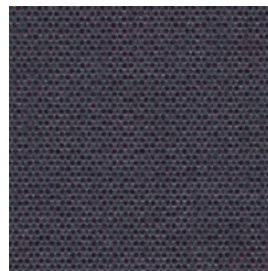
601



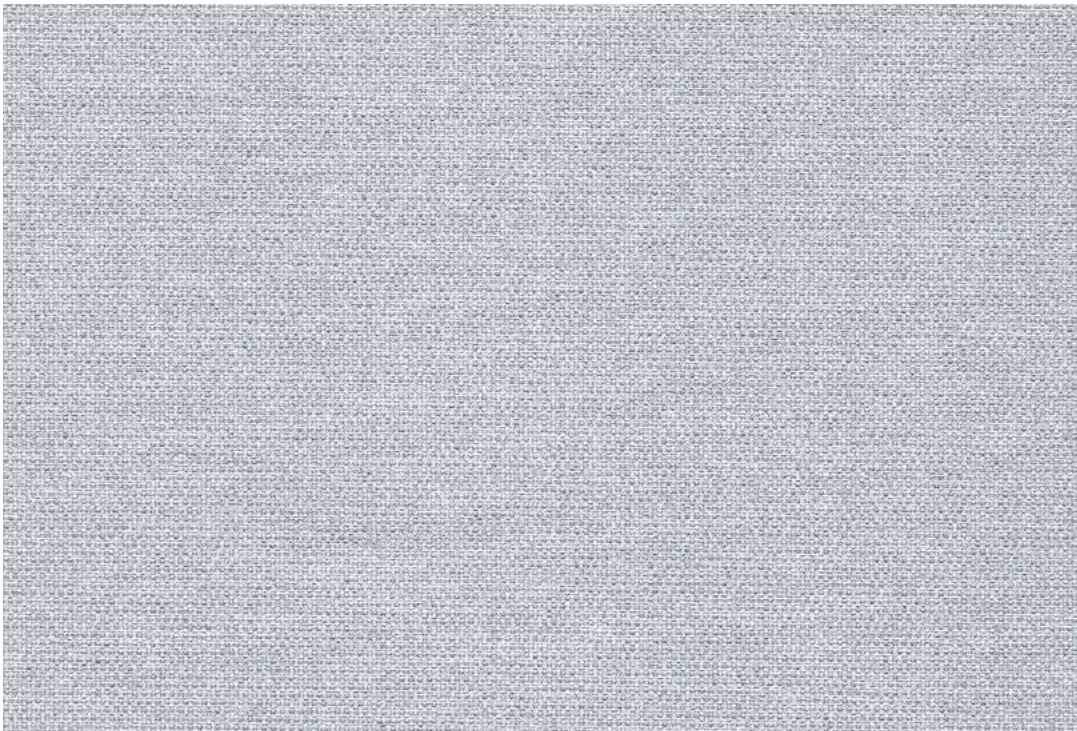
161



701



191



Apo

Design: Ronan & Erwan Bouroullec

DK

Anvendelse Rullegardin.

Beskrivelse 100% Trevira CS. Alubelægning. Bredde 240 cm. Vægt 210 g/m². Tykkelse 0.40 mm. Transfer tryk. Nuanceforskell kan forekomme.

Lysægthed Interiør 4-7, Udvendt 7 (ISO 105-B02).

Flammesikring EN 13501-1 (B-s1, d0), BS 5867 part 2 type B, DIN 4102 B1, NFPA 701, GB 8624 B1 EN 13773 class 1, GB 50222 B1, JIS L 1091 A-1 D (Kopi af testrapport kan rekvireres).

Vedligeholdelse Se ISO symboler. Rengør med en tør eller opvredet klud. Brug kun rent vand. Kan også børstes eller støvsuges (nedsat sug) med børste mundstykke. Ved kraftigere tilsmudsning anbefales det at kontakte professionel renseri.

UK

Application Roller blind.

Description 100% Trevira CS. Aluminium backing. Width 240 cm (94.5 inches). Weight 210 g/m². Thickness 0.40 mm. Transfer print. Colour differences may occur.

Lightfastness Interior 4-7, Exterior 7 (ISO 105-B02).

Flame resistance EN 13501-1 (B-s1, d0), BS 5867 part 2 type B, DIN 4102 B1, NFPA 701, GB 8624 B1 EN 13773 class 1, GB 50222 B1, JIS L 1091 A-1 D (Copy of test report available).

Care Please see the ISO symbols. Clean with a dry or moist wrung cloth. Only use clean water. Can also be brushed or carefully vacuumed (reduce suction power) with a brush nozzle. In case of considerable staining, we recommend contacting a professional dry cleaner.

DE

Anwendungsbereich Rollos.

Beschreibung 100% Trevira CS. Alubedampft. Breite 240 cm. Gewicht 210 g/m². Dicke 0.40 mm. Transferdruck. Farbunterschiede können vorkommen.

Lichtechtheit Innen 4-7. Äußeres 7 (ISO 105-B02).

Flammschutz EN 13501-1 (B-s1, d0), BS 5867 part 2 type B, DIN 4102 B1, NFPA 701, GB 8624 B1 EN 13773 class 1, GB 50222 B1, JIS L 1091 A-1 D (Testbericht verfügbar).

Pflege Siehe ISO Pflegesymbole. Mit einem trockenen oder feuchten, ausgedrückten Tuch reinigen. Nur sauberes Wasser verwenden. Reinigung durch vorsichtiges Abbürsten oder saugen mit Bürstenaufsatz und reduzierter Leistung möglich. Bei starker Verschmutzung empfehlen wir einen professionellen Reinigungsdienst.

NL

Toepassing Rolgordijn.

Omschrijving 100% Trevira CS. Aluminium backing. Breedte 240 cm. Gewicht 210 g/m². Dikte 0.40 mm. Transfer print.

Kleurverschillen kunnen optreden.

Lichtechtheid Interieur 4-7. Extérieur 7 (ISO 105-B02).

Brandwerendheid EN 13501-1 (B-s1, d0), BS 5867 part 2 type B, DIN 4102 B1, NFPA 701, GB 8624 B1, EN 13773 class 1, GB 50222 B1, JIS L 1091 A-1 D (Op aanvraag sturen wij u graag een kopie van het testrapport toe).

Onderhoud Zie de ISO symbolen. Schoon deppen met een droge of goed uitgewrongen, vochtige doek. Alleen schoon water gebruiken. Kan ook schoongemaakt worden door middel van een borstel of een stofzuiger met borstelstuk op halve kracht. In het geval van serieuze vlekvorming, raden we aan contact op te nemen met een professionele reiniger.

FR

Domaine d'utilisation Store.

Description 100% Trevira CS. Enduit aluminium. Largeur 240 cm. Poids 210 g/m². Épaisseur 0.40 mm. Impression par transfert. Écart des coloris possibles.

Résistance à la lumière Intérieur 4-7. Extérieur 7 (ISO 105-B02).

Normes au feu EN 13501-1 (B-s1, d0), BS 5867 part 2 type B, DIN 4102 B1, NFPA 701, GB 8624 B1 EN 13773 class 1, GB 50222 B1, JIS L 1091 A-1 D (La copie du compte rendu des tests est disponible sur demande).

Entretien Voir les symboles ISO. Nettoyez avec un chiffon sec ou chiffon humide bien essoré. Utilisez uniquement de l'eau propre. Le tissu peut aussi être brossé ou aspiré avec soin (puissance d'aspiration réduite) avec un embout en forme de brosse. Dans le cas où le tissu a été fortement taché, nous suggérons de contacter un pressing professionnel.

IT

Destinazione d'uso Tende a rullo.

Caratteristiche 100% Trevira CS. Rifinito sul retro con alu. Altezza 240 cm. Peso 210 g/m². Spessore 0.40 mm. Transfer print. Possibili differenze per colore.

Resistenza alla luce Interno 4-7. Esterno 7 (ISO 105-B02).

Ignifugazione EN 13501-1 (B-s1, d0), BS 5867 part 2 type B, DIN 4102 B1, NFPA 701, GB 8624 B1 EN 13773 class 1, GB 50222 B1, JIS L 1091 A-1 D (Disponibile copia del test).

Manutenzione Per favore seguire simboli ISO. Pulire con un panno asciutto o umido strizzato. Utilizzare solo acqua pulita. Può anche essere spazzolato oppure accuratamente aspirato (ridurre la potenza di aspirazione) con un ugello a spazzola. In caso di macchie considerevoli, si consiglia di contattare un lavasecco professionale.

ES

Aplicación Estor.

Decripción 100% Trevira CS. Reverso de aluminio. Anchura 240 cm. Peso 210 g/m². Grosor 0.40 mm. Impresión digital textil. Posibles variaciones de color.

Resistencia a la luz Interior 4-7. Exterior 7 (ISO 105-B02).

Resistencia al fuego EN 13501-1 (B-s1, d0), BS 5867 part 2 type B, DIN 4102 B1, NFPA 701, GB 8624 B1, EN 13773 class 1, GB 50222 B1, JIS L 1091 A-1 D (Copia del informe de ensayos disponible).

Limpieza Consulte los símbolos ISO. Limpiar con un paño seco o ligeramente humedecido. Utilizar únicamente agua. También se puede cepillar o aspirar con cuidado (baja intensidad de succión) con una boquilla de cepillo. En caso de manchas considerables, recomendamos contactar con un profesional de limpieza.

SE

Användning Rullgardin.

Beskrivning 100% Trevira CS. Aluminiumsbaksida. Bredd 240 cm. Vikt 210 g/m². Tjocklek 0.40 mm. Transfertryck. Viss nyansskillnad kan förekomma.

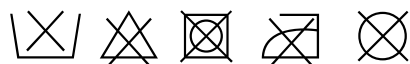
Ljushårdighet Interiör 4-7. Exteriör 7 (ISO 105-B02).

Flammskydd EN 13501-1 (B-s1, d0), BS 5867 part 2 type B, DIN 4102 B1, NFPA 701, GB 8624 B1 EN 13773 class 1, GB 50222 B1, JIS L 1091 A-1 D (Kopia av testrapport finns tillgänglig vid förfrågan).

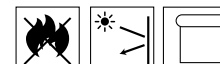
Underhåll Se ISO symboler. Rengör med en torr eller fuktad trasa. Använd endast rent vatten. Kan även borstas eller försiktigt dammsugas med ett borstmunstycke. I händelse av fläckar rekommenderar vi att du lämnar in rullgardinen till kemtvätt.

ZH

产品应用 遮光卷帘。
产品详情 100% 德国阻燃丝。铝涂层背膜。幅宽：240厘米。克重：210克/平方米。厚度：0.40毫米。转印。可能出现色差。
日晒色牢度 内层：4-7，外层：7 (ISO 105-B02)。
阻燃级别 欧洲标准EN 13501-1 (B-s1, d0)，英国标准BS 5867 第2部分B级，德国标准DIN 4102 B1，美国标准NFPA 701，中国标准GB 8624 B1，欧洲标准EN 13773 1级，中国标准GB 50222 B1，日本标准JIS L 1091 A-1 D。（可提供检测报告副本）。
保养须知 请参照ISO标识。用于干布或拧干的湿布清洁。只可用清水。也可用毛刷或毛刷吸嘴（减少吸力）小心清理。如脏污较严重，建议联系专业干洗服务。



Contact and further information kvadrat.dk



5 year warranty

Ronan and Erwan Bouroullec

Renowned French designers Ronan and Erwan Bouroullec have made a significant impact on the world of design since they began working together in 1997. Their globally acclaimed work includes furniture and product design, interior design, architectural projects, and the development of conceptual objects.

Apo

Apo by Ronan and Erwan Bouroullec has an elegant woven look and an aluminium backing. Slightly transparent, it provides a unique combination of visual comfort, thermal comfort and acoustic comfort. The good acoustic performance with 40% sound absorption is exceptional for a roller blind textile. Colours range from dark and light neutrals to colourful gold, green and blue hues.