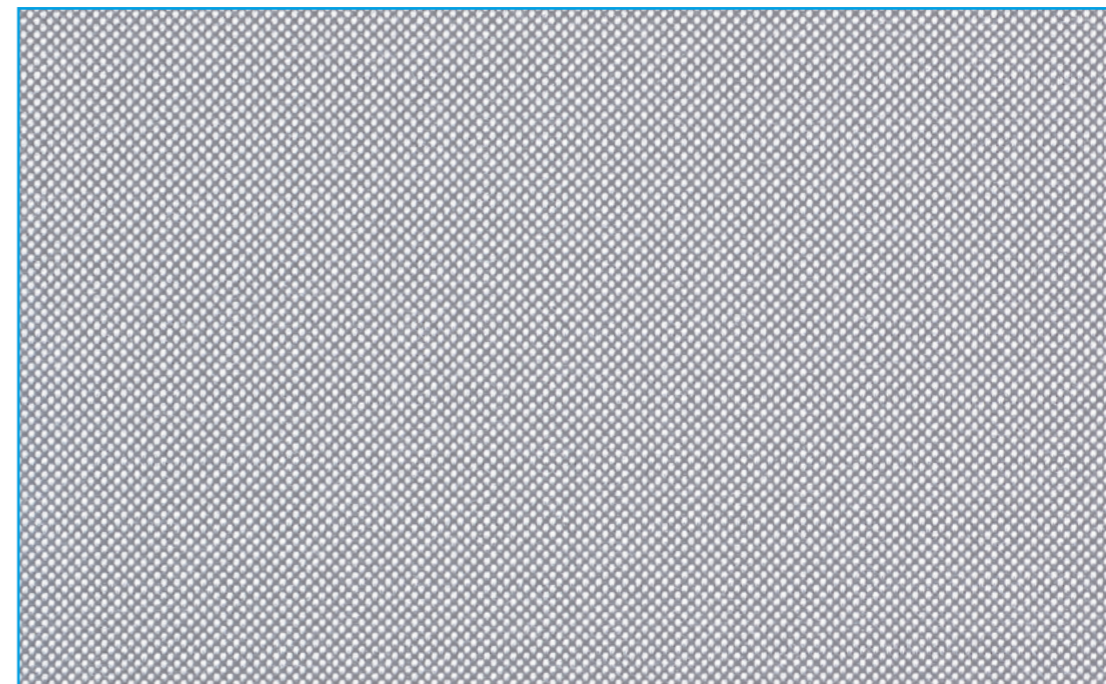




Nr. 122039000002707/Verosol



ComfortScreen

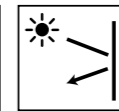
Affordable and sustainable
100% PVC free

- Great view outside
- Excellent value / performance ratio
- Heat and glare control
- Easy to process
- Available in a width up to 2.8 meter

kvadrat verosol

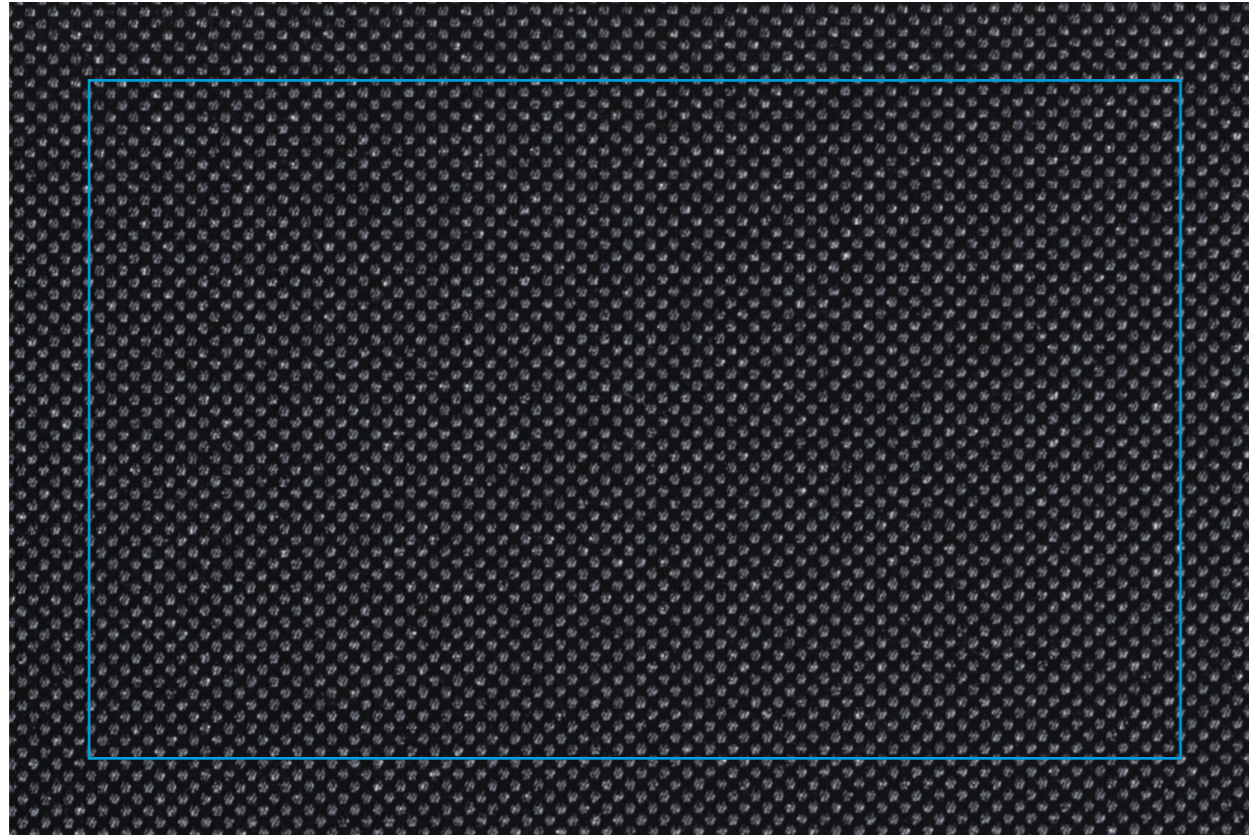


Management System
ISO 9001:2015
ISO 14001:2015
www.tuv.com
ID: 9186621700



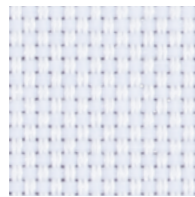
www.kvadratverosol.nl

Transparencies

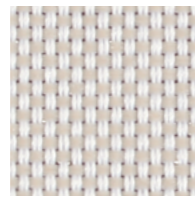


103 2% OF

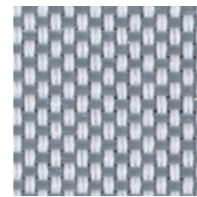
Colours



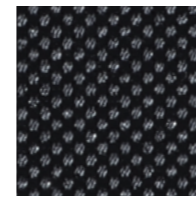
ED01 White (031)



ED04 Dark beige (034)



ED03 Grey (033)



EB01 Black (011)

Specifications 103 ComfortScreen

| | | |
|--|----------------------------|---|
| | Openness factor | 3% |
| | Thickness (mm) | 0.44 |
| | Weight (g/m ²) | 250 |
| | Width (cm) | 280 max. |
| | Composition | Polyester |
| | IR emissivity (metal side) | 0.32 |
| | Flame retardant standards | EN 13501-1 B-s1,d0, DIN 4102 B1, NFPA 701, BS 5867 part 2 type B, EN 13773 Class 1, AS/NZS 1530.3 (0-0-0-2) |
| | Environmental standards | STANDARD 100 Class IV by OEKO-TEX®, HPD2.1, RoHS2, REACH, GreenGuard (LEED), GreenGuard Gold, Formaldehyde free, Halogen free, Phthalate free, Anti-microbials free, PVC free |

| | White | Black | |
|--|---|-------|-----|
| | Solar reflectance outside | 62% | 62% |
| | Light transmission | 7% | 4% |
| | Visual contact according to EN 14501:2021 | 2 | 2 |
| | Glare control rating according to EN 14501:2021 | 2 | 3 |

| | Solar control double glass <i>(Glazing G EN14501:2021)</i> | | | Insulating double glass <i>(Glazing F EN14501:2021)</i> | | | |
|--|---|-------|-------|--|-------|-------|------|
| | Glazing performance | White | Black | Glazing performance | White | Black | |
| | Light Transmission LT value | 70% | 6% | 3% | 82% | 6% | 4% |
| | Solar heat gain g-value / SHGC | 33% | 16% | 16% | 65% | 33% | 33% |
| | Insulation U-value (W/m ² K) | 1.0 | 0.76 | 0.76 | 1.1 | 0.80 | 0.80 |

| | Solar control triple glass <i>(Glazing I)</i> | | | Insulating triple glass <i>(Glazing H EN14501:2021)</i> | | | |
|--|--|-------|-------|--|-------|-------|------|
| | Glazing performance | White | Black | Glazing performance | White | Black | |
| | Light Transmission LT value | 64% | 5% | 3% | 74% | 6% | 3% |
| | Solar heat gain g-value / SHGC | 31% | 17% | 17% | 53% | 31% | 31% |
| | Insulation U-value (W/m ² K) | 0.6 | 0.51 | 0.51 | 0.7 | 0.59 | 0.59 |

Optical properties are measured according to EN 14500, ISO 9050, ASTM C1371 & EN 410. For more information about technical data, energy savings and worldwide distribution, refer to www.kvadratverosol.nl. Disclaimer: The technical data is based on average data and is subject to production tolerances. Subject to misprints, errors and technical modifications. All technical details per colour available upon request.

The colours shown may vary from the supplied fabric due to batch variation in the production process. Please visit www.kvadratverosol.nl to order samples of your choice.