

Installation guide

kvadrat shade

Contents

1. Brackets, chain-operated
2. Brackets, motor-operated
3. Brackets, Twin Pull
4. Semi-open cassette
5. Closed cassette
6. Profile side guide
7. Cable side guide

Installation Brackets, chain-operated

When installing the roller blind system the following aspects should be taken into consideration, the weight of the rollerblind, the mounting solution and the type and condition of the mounting surface.

The weight of the roller blind system will be dependent upon the specified sizes and chosen operating solution. A 50 cm chain-operated, Semi-open cassette roller blind with 2 m Athos weighs approx. 3.4 kg.

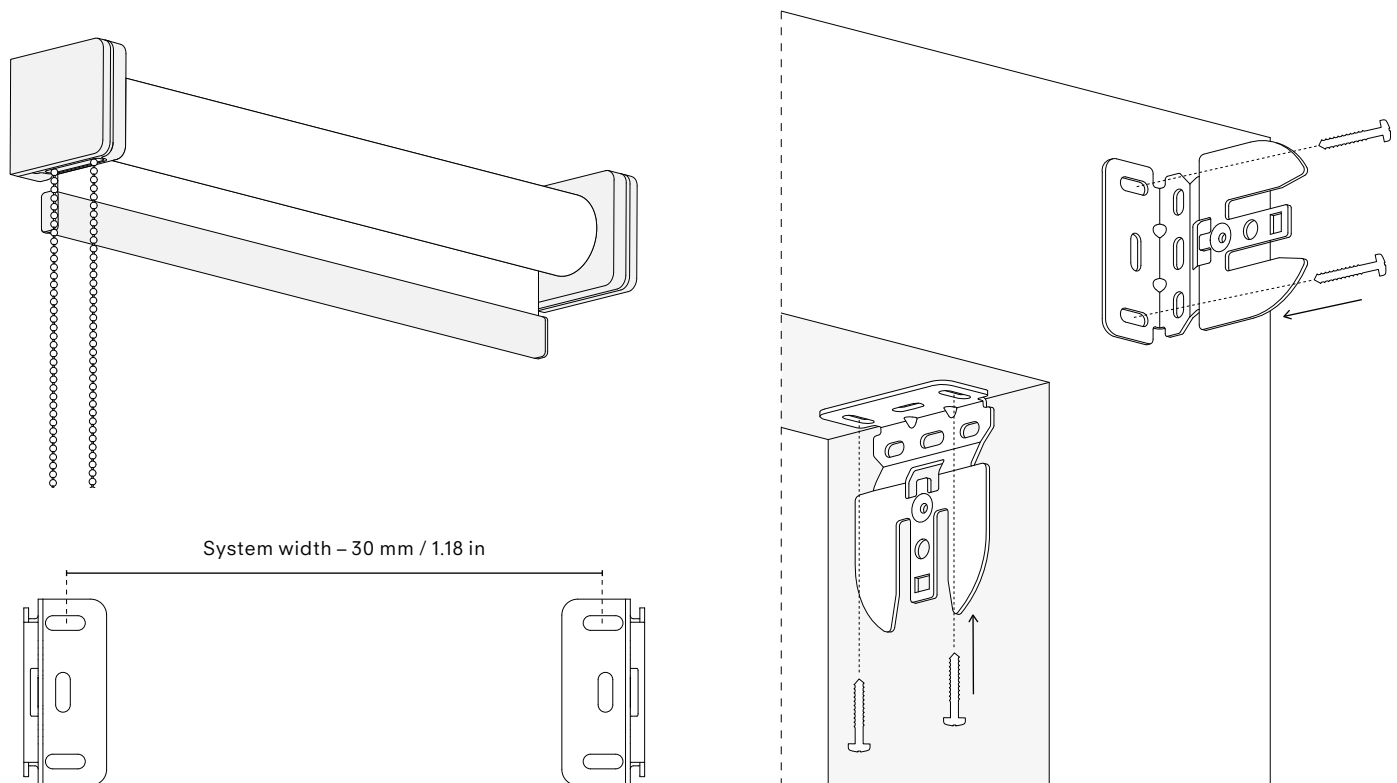
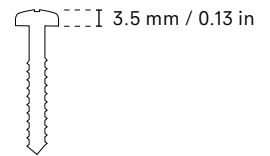
For a typical concrete wall it is recommended to drill a 6 mm hole with a depth of at least 45 mm, with a 6 mm rawlplug and a 4×40 mm screw.

For a typical plaster wall it is recommended to use a 14×39 mm metal plasterboard plug and a 4×40 mm screw.

For porous walls it is recommended to drill a 6 mm hole with a depth of at least 45 mm, with a 2-component injection fixing and a 4×40 mm screw.

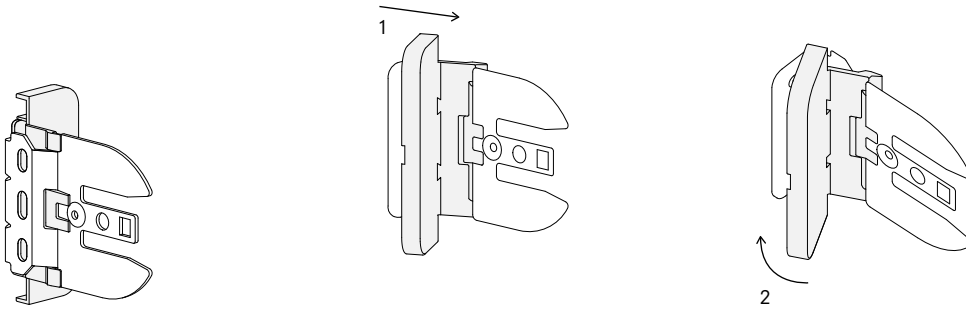
Please note: The mounting solution(s) must be assessed by a professional on site in order to ensure that this is suitable for the mounting surface(s) in question.

The rail needs to be perfectly level. If not, the textile may be damaged when the roller blind is used.

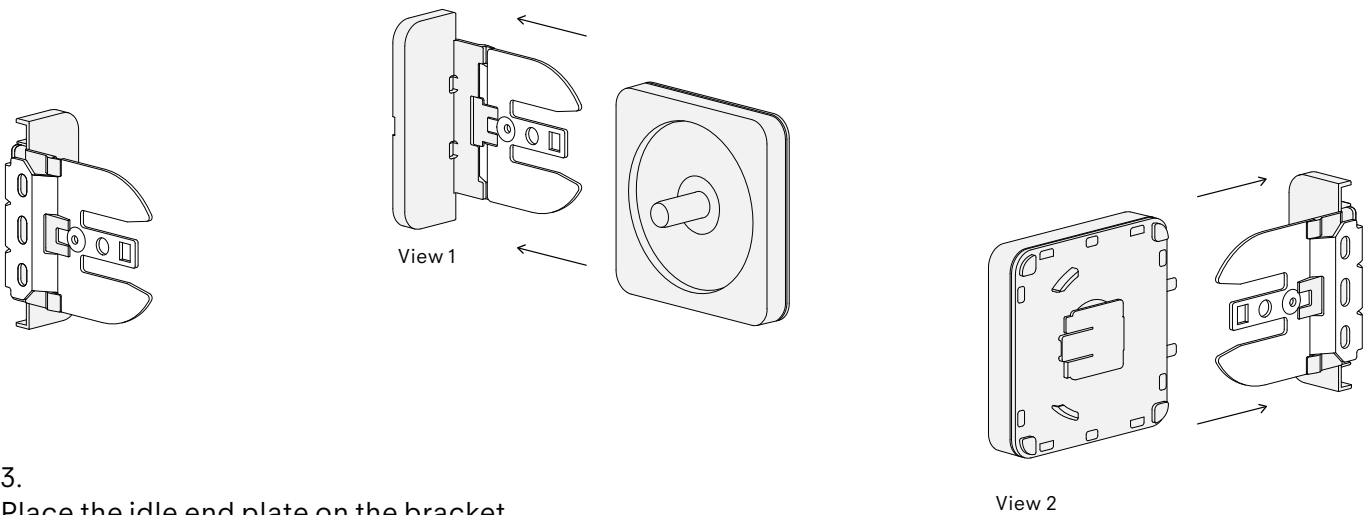


1. Locate the desired position and height of the brackets. Mark the position of the screws in the middle of the slot holes at the system width minus 30 mm / 1.18 in. Please note: The head of the screws can be max 3,5 mm (0,13 in) height.

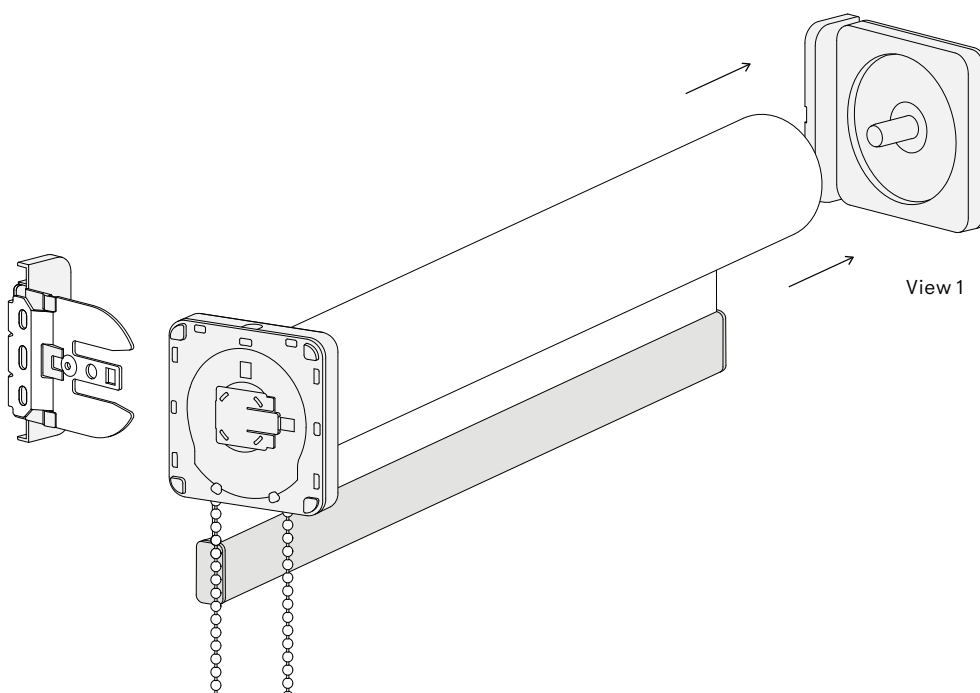
Installation Brackets, chain-operated



2.
Place the screw covercap between the opening of the bracket and click it in. Please note: The head of the screws can be max 3,5 mm (0,13 in) height, or else it won't click.

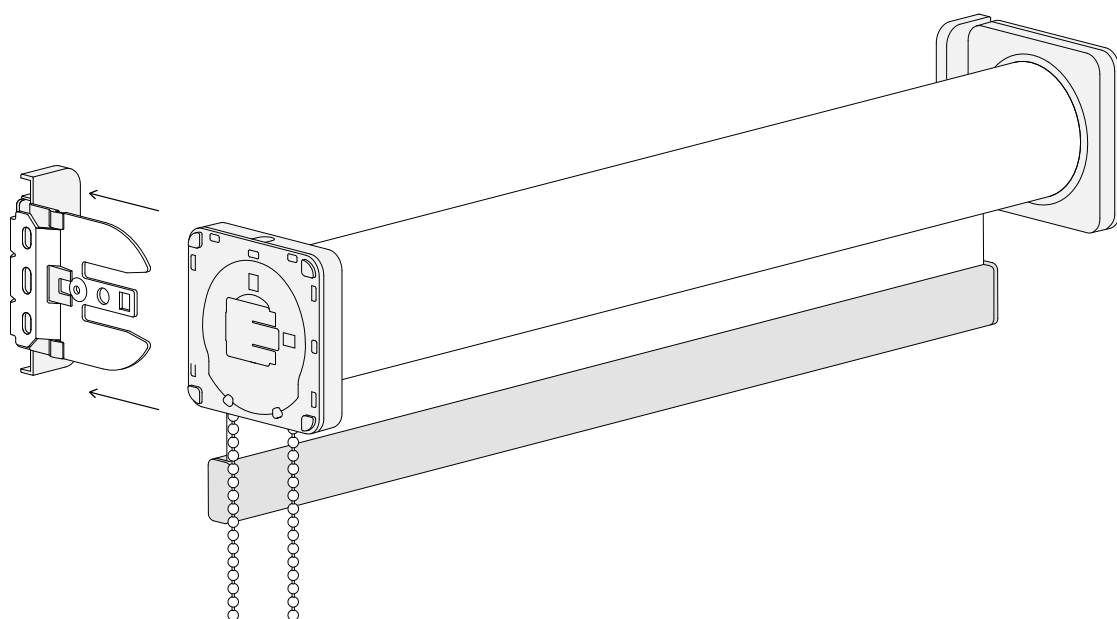


3.
Place the idle end plate on the bracket.

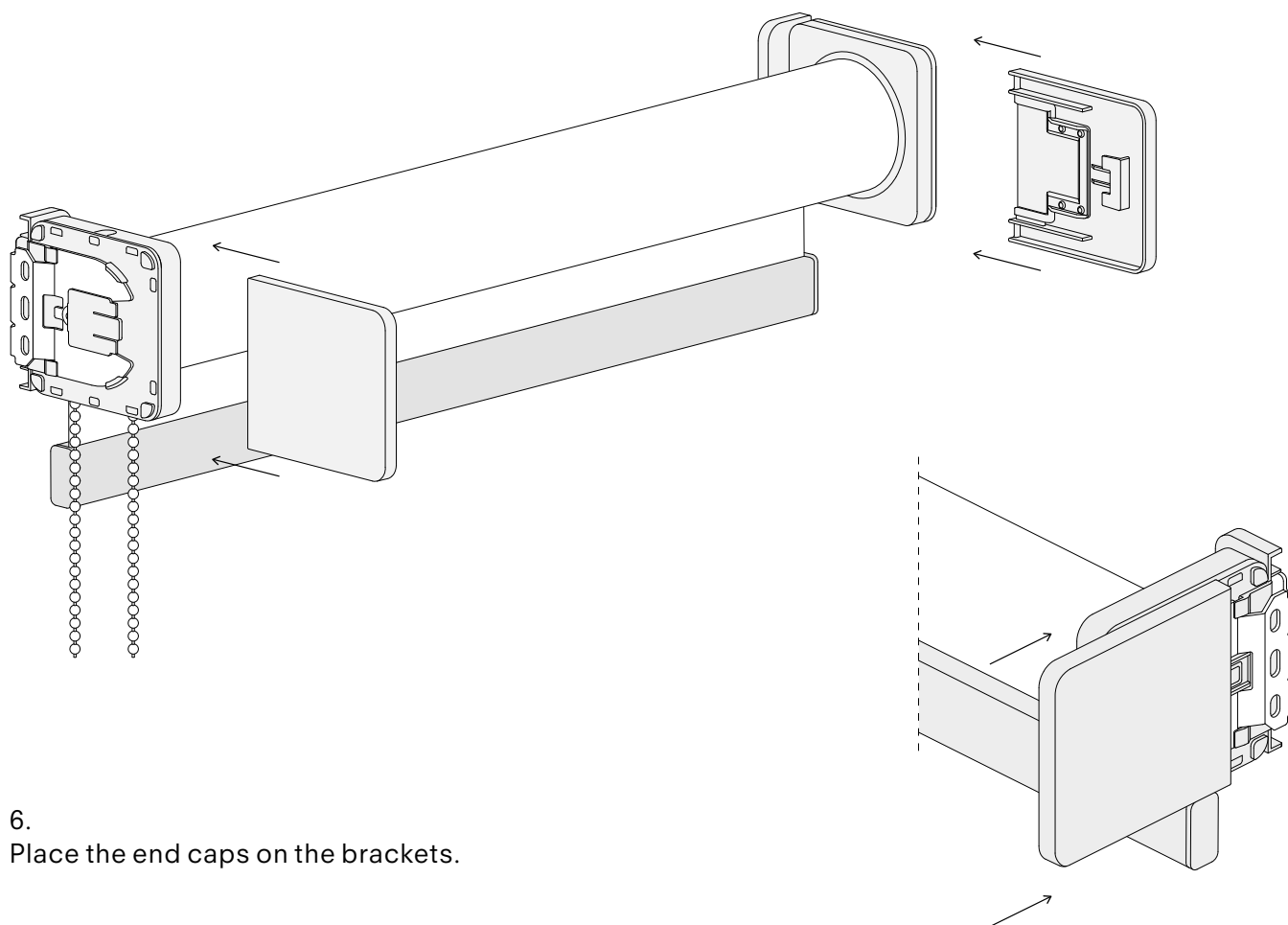


4.
Place the roller blind on the idle end pin.

Installation Brackets, chain-operated

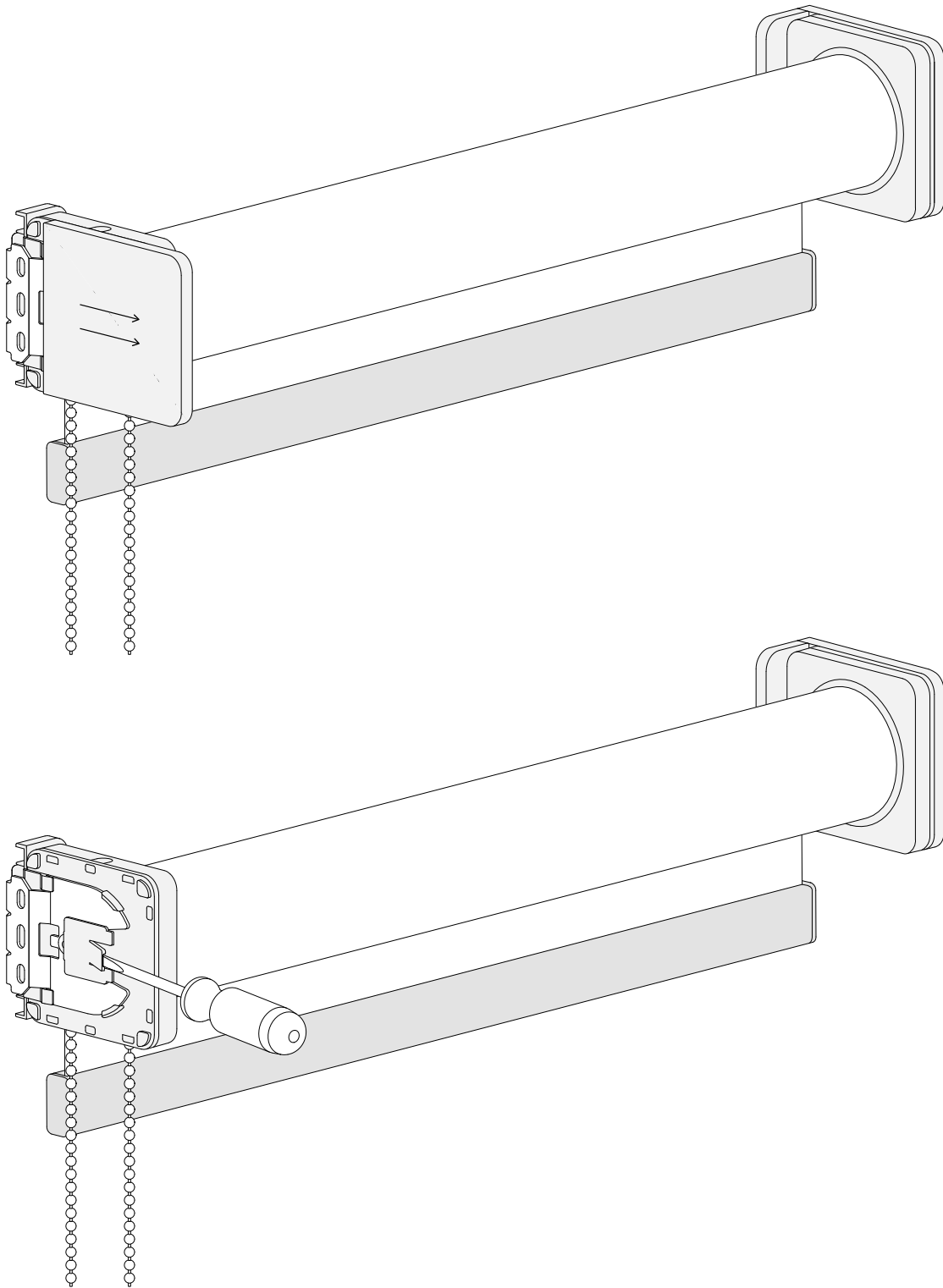


5.
Once the roller blind is secured in the idle end pin,
place the control side of the roller blind in the bracket.



6.
Place the end caps on the brackets.

Removal



7. To remove the roller blind from the brackets, remove the end cap of the control side and place a screwdriver between the bracket and the mechanism. Twist the screwdriver lightly until the roller blind comes loose.

Installation Brackets, motor-operated

When installing the roller blind system the following aspects should be taken into consideration, the weight of the rollerblind, the mounting solution and the type and condition of the mounting surface.

The weight of the roller blind system will be dependent upon the specified sizes and chosen operating solution. A 50 cm chain-operated, Semi-open cassette roller blind with 2 m Athos weighs approx. 3.4 kg.

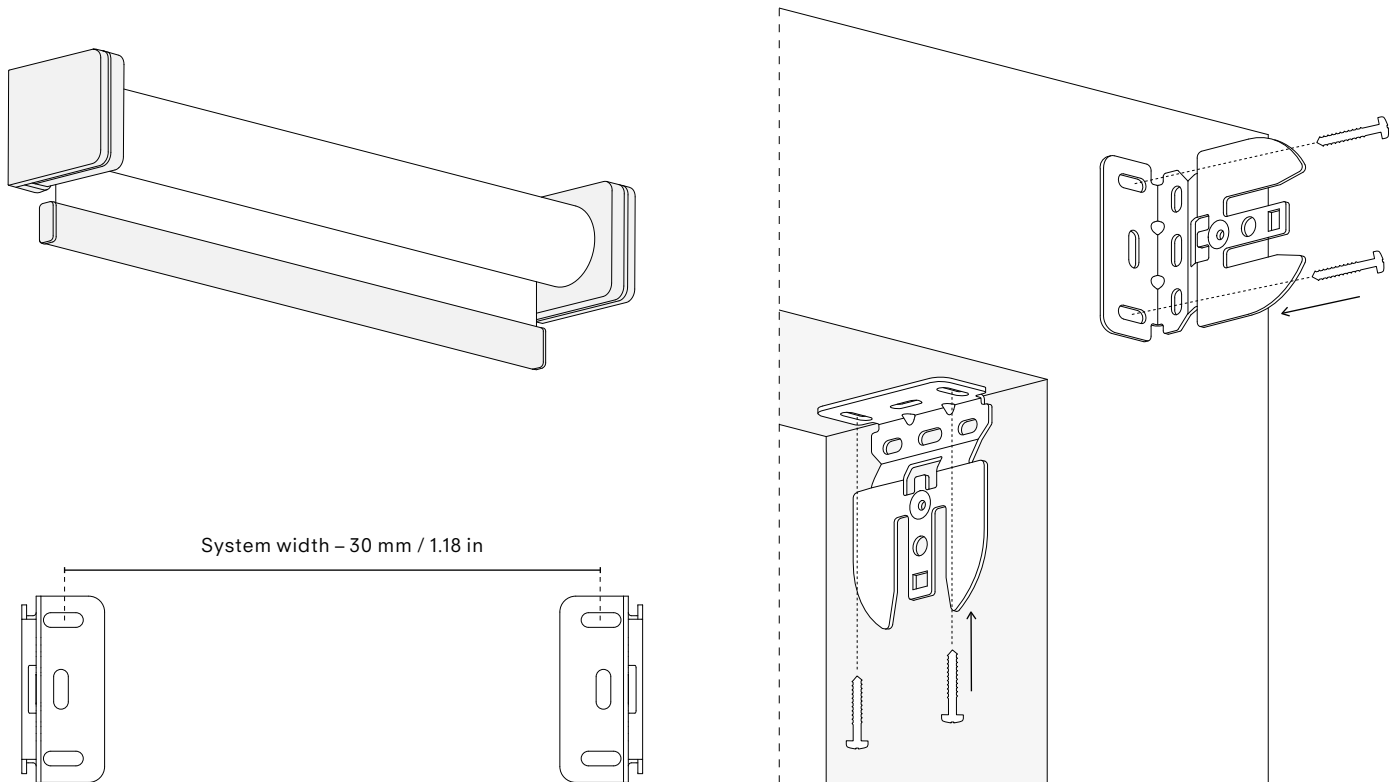
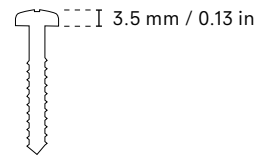
For a typical concrete wall it is recommended to drill a 6 mm hole with a depth of at least 45 mm, with a 6 mm rawlplug and a 4×40 mm screw.

For a typical plaster wall it is recommended to use a 14×39 mm metal plasterboard plug and a 4×40 mm screw.

For porous walls it is recommended to drill a 6 mm hole with a depth of at least 45 mm, with a 2-component injection fixing and a 4×40 mm screw.

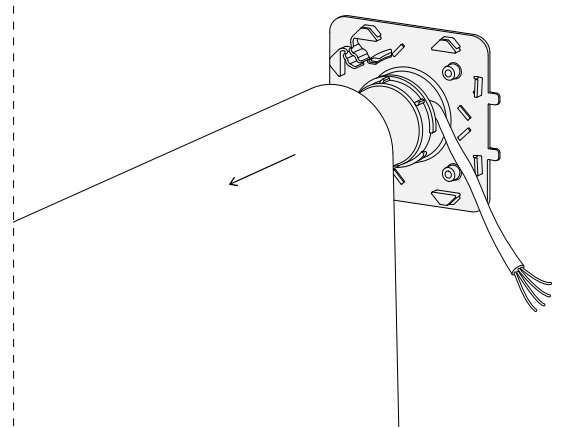
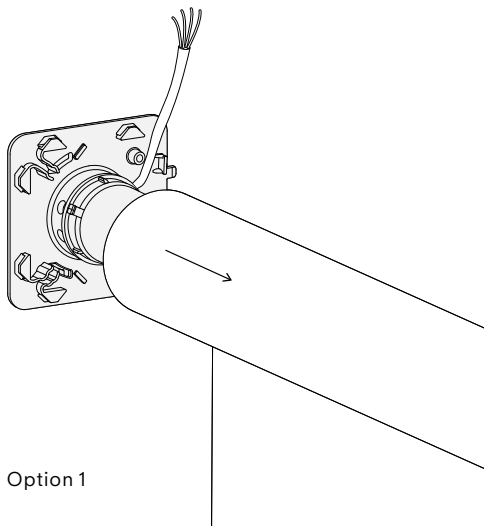
Please note: The mounting solution(s) must be assessed by a professional on site in order to ensure that this is suitable for the mounting surface(s) in question.

The rail needs to be perfectly level. If not, the textile may be damaged when the roller blind is used.

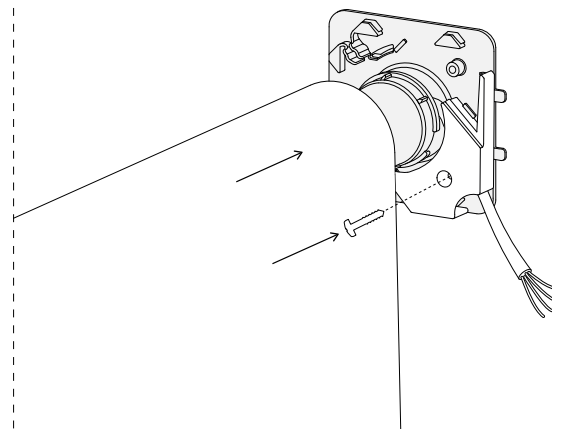
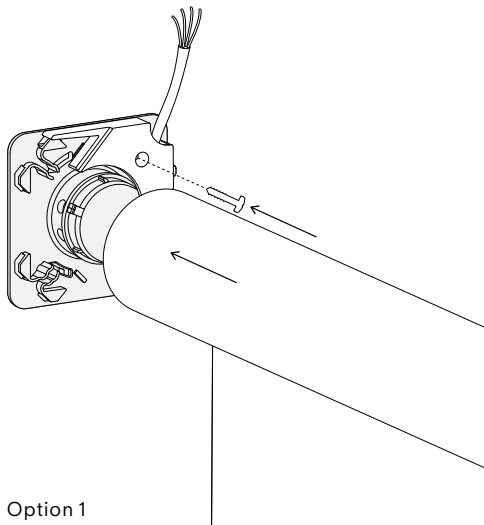


1. Locate the desired position and height of the brackets. Mark the position of the screws in the middle of the slot holes at the system width minus 30 mm / 1.18 in. Please note: The head of the screws can be max 3,5 mm (0,13 in) height.

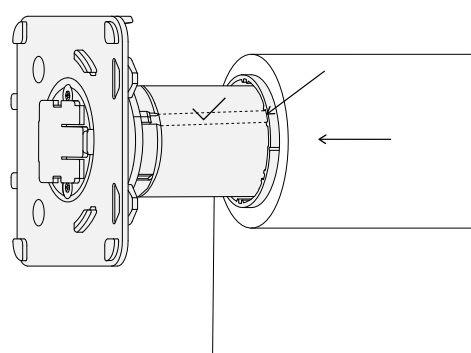
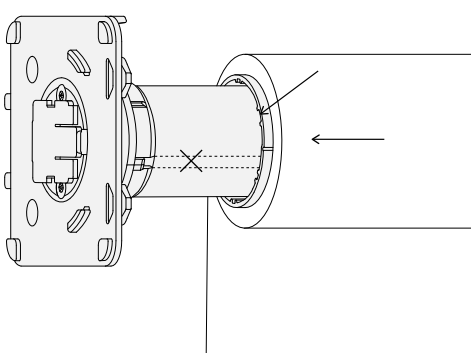
Installation Brackets, motor-operated



2.
Slide the motor out of the tube in order to cover the cable with the inner bracket. Use a torx 10 screwdriver to thighten the inner bracket to the signature plate. There are two options based on where the cable should go.

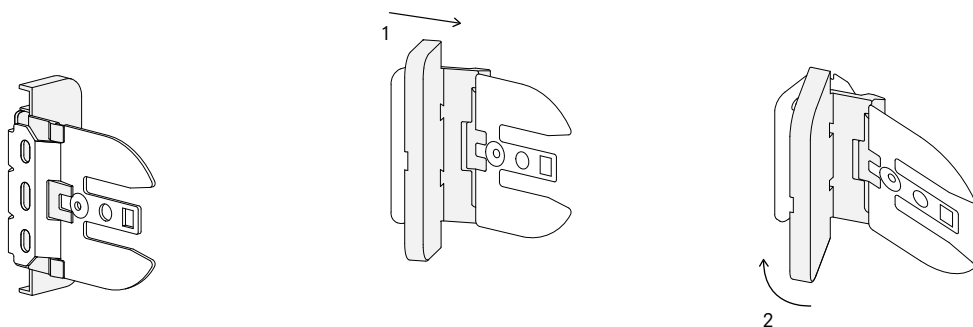


3.
Slide the motor back into the tube making sure that the crown of the motor is inserted correctly.

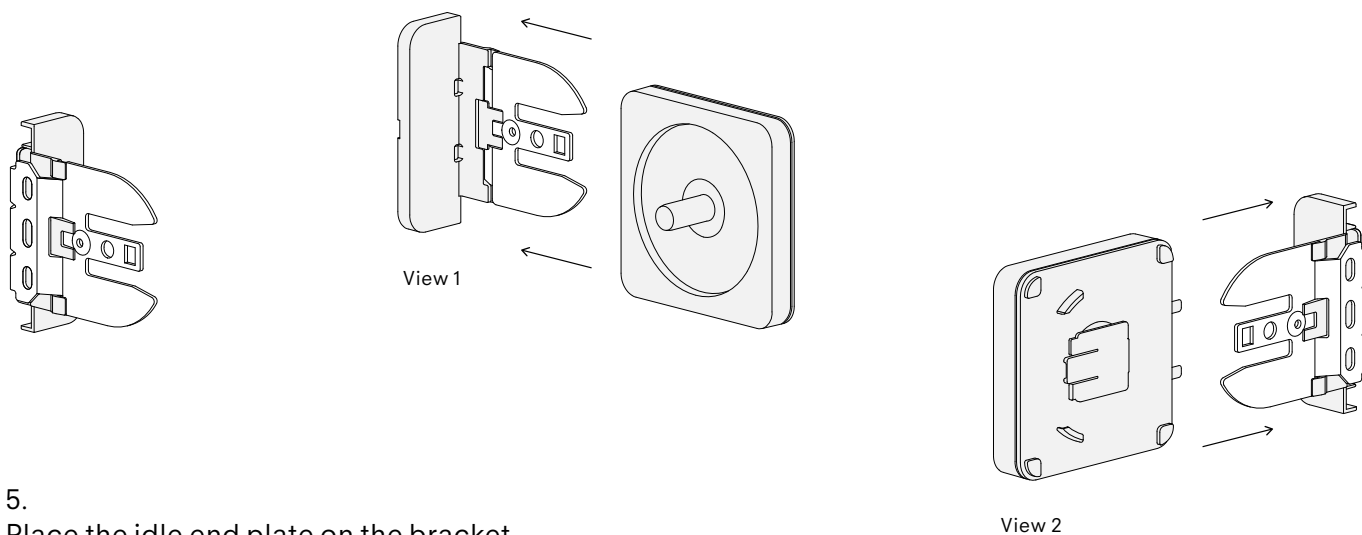


Please note : the wide rib should be inserted in the wider groove inside the tube.

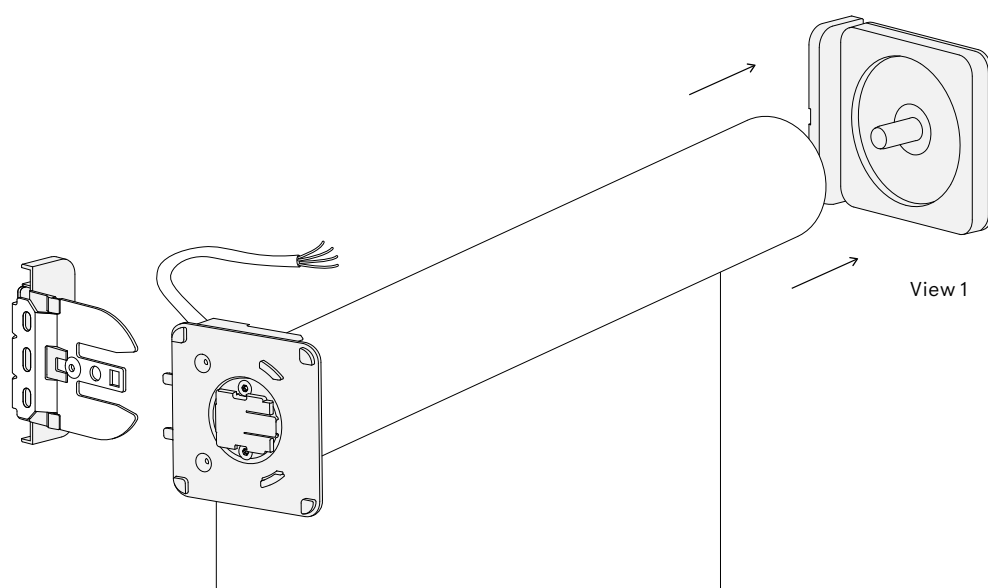
Installation Brackets, motor-operated



4.
Place the screw covercap between the opening of the bracket and click it in. Please note: The head of the screws can be max 3,5 mm (0,13 in) height, or else it won't click.

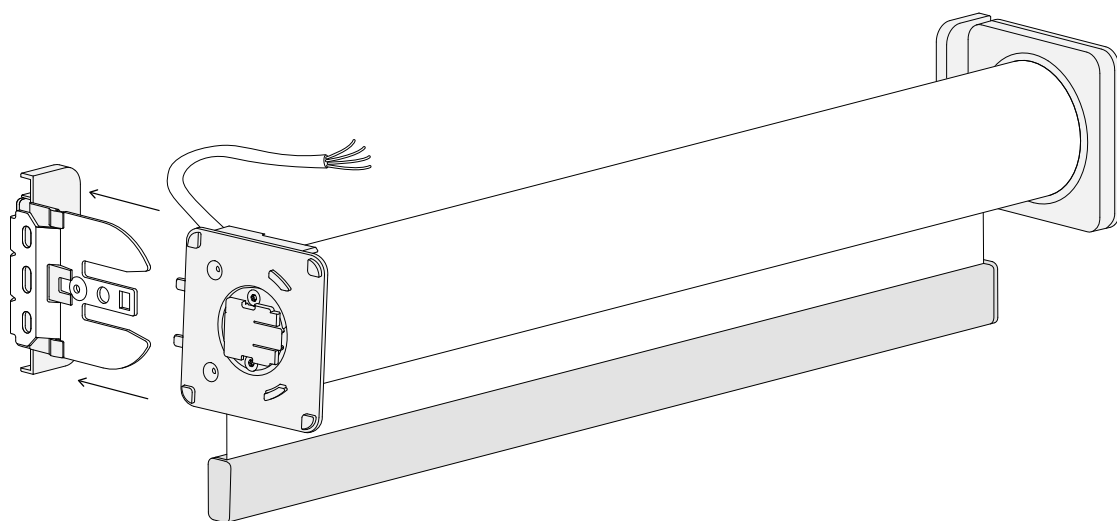


5.
Place the idle end plate on the bracket.

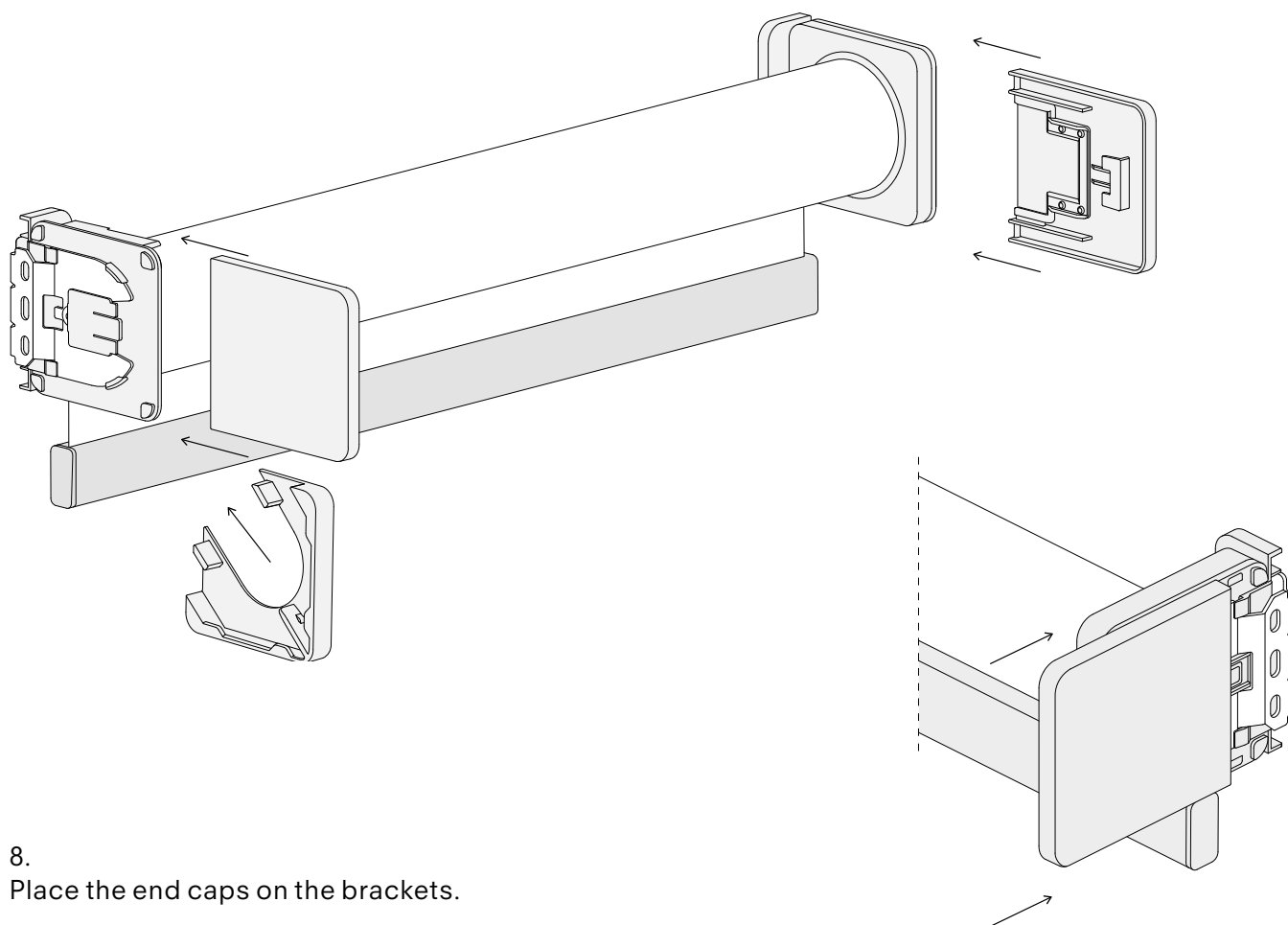


6.
Place the roller blind on the idle end pin.

Installation Brackets, motor-operated

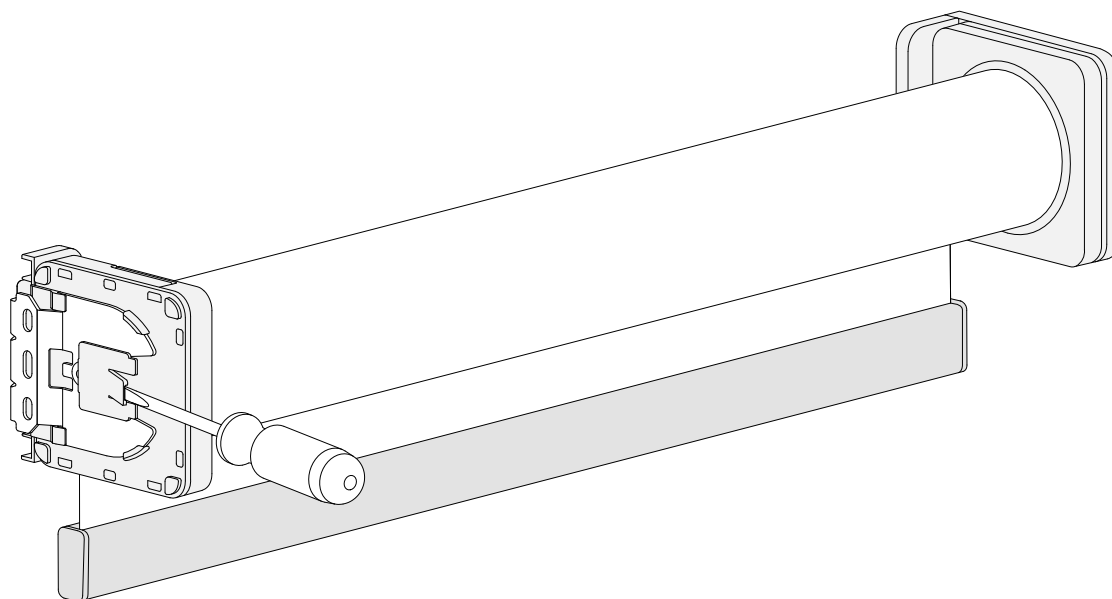
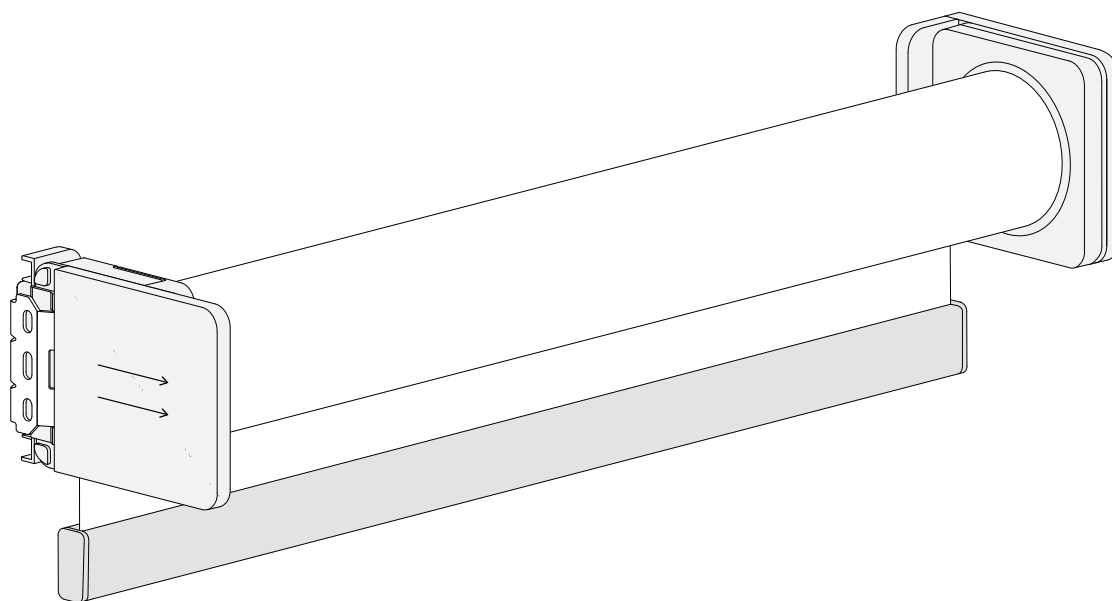


7.
Once the roller blind is secured in the idle end pin,
place the control side of the roller blind in the bracket.



8.
Place the end caps on the brackets.

Removal



9.
To remove the roller blind from the brackets, remove the end cap of the control side and place a screwdriver between the bracket and the mechanism. Twist the screwdriver lightly until the roller blind comes loose.

Installation Brackets, Twin Pull

When installing the roller blind system the following aspects should be taken into consideration, the weight of the rollerblind, the mounting solution and the type and condition of the mounting surface.

The weight of the roller blind system will be dependent upon the specified sizes and chosen operating solution. A 50 cm chain-operated, Semi-open cassette roller blind with 2 m Athos weighs approx. 3.4 kg.

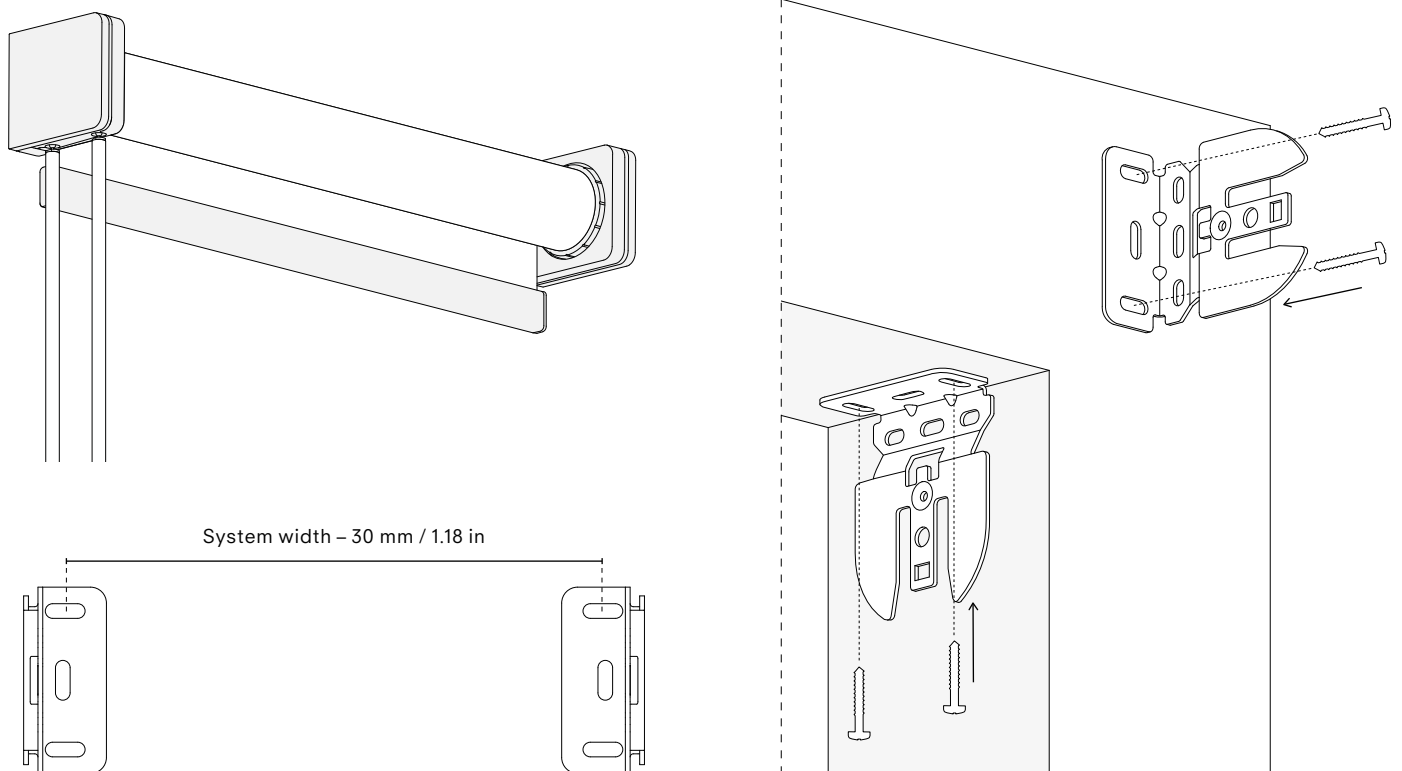
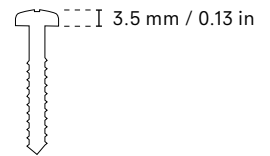
For a typical concrete wall it is recommended to drill a 6 mm hole with a depth of at least 45 mm, with a 6 mm rawlplug and a 4×40 mm screw.

For a typical plaster wall it is recommended to use a 14×39 mm metal plasterboard plug and a 4×40 mm screw.

For porous walls it is recommended to drill a 6 mm hole with a depth of at least 45 mm, with a 2-component injection fixing and a 4×40 mm screw.

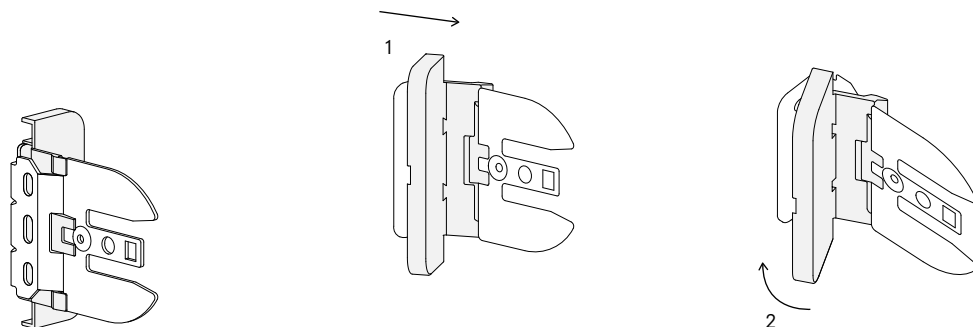
Please note: The mounting solution(s) must be assessed by a professional on site in order to ensure that this is suitable for the mounting surface(s) in question.

The rail needs to be perfectly level. If not, the textile may be damaged when the roller blind is used.

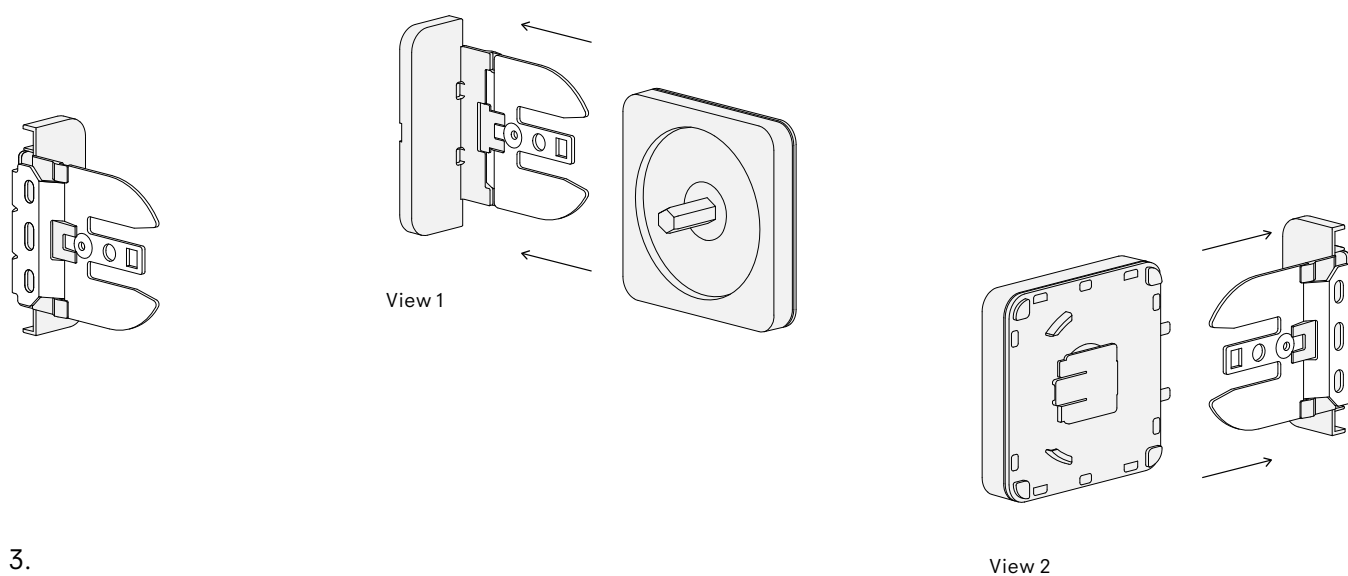


1. Locate the desired position and height of the brackets. Mark the position of the screws in the middle of the slot holes at the system width minus 30 mm / 1.18 in. Please note: The head of the screws can be max 3,5 mm (0,13 in) height.

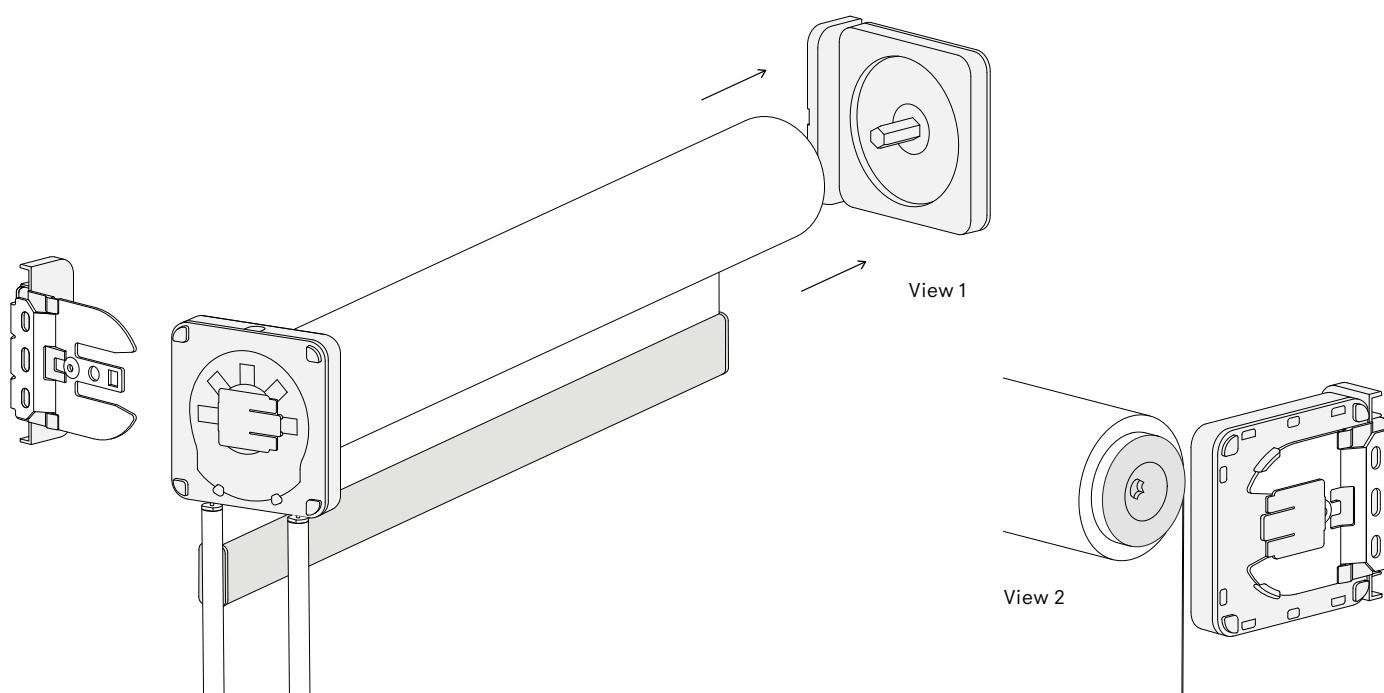
Installation Brackets, Twin Pull



2.
Place the screw covercap between the opening of the bracket and click it in.

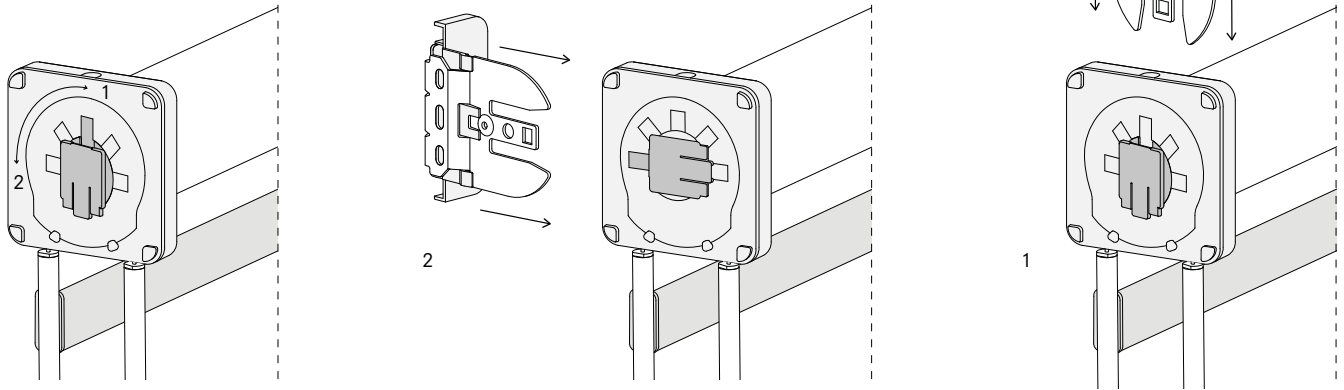


3.
Place the idle end plate on the bracket.

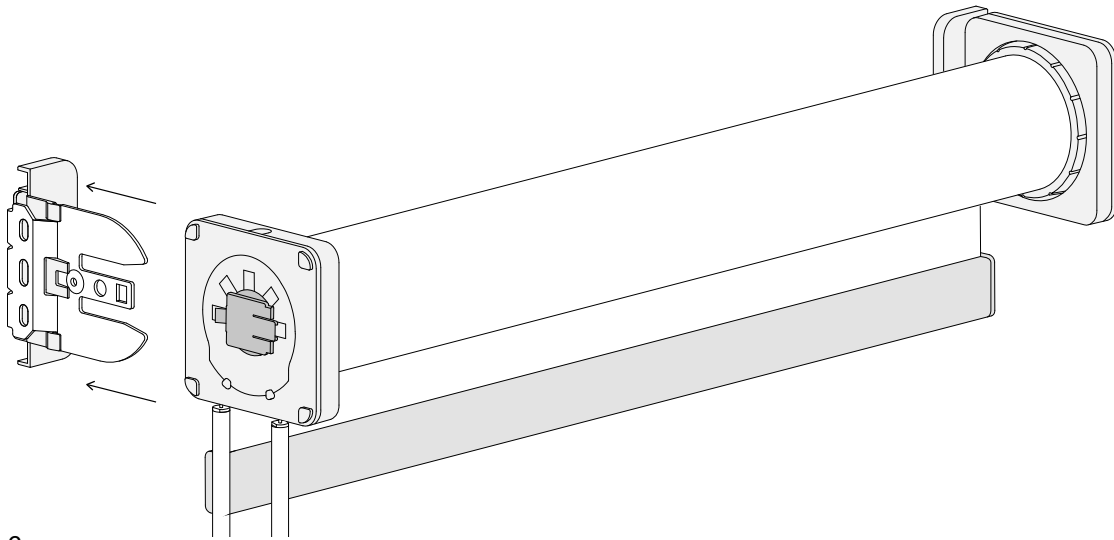


4.
Place the roller blind on the idle end pin.

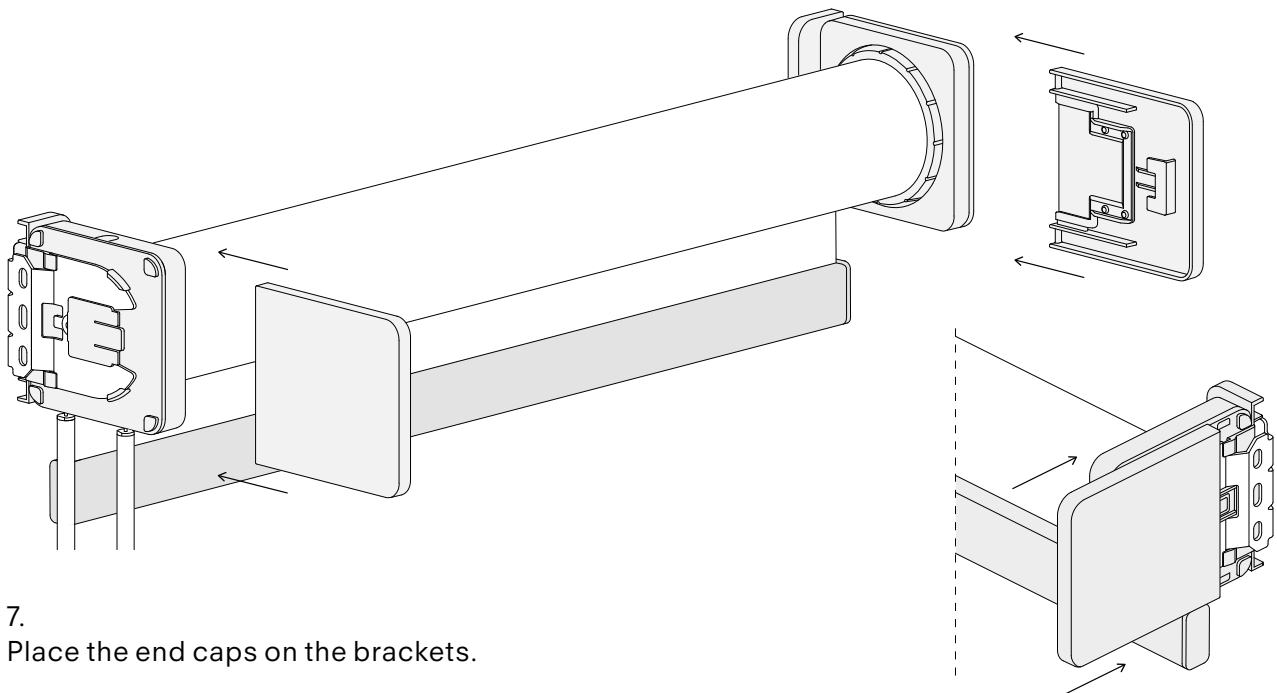
Installation Brackets, Twin Pull



5.
Rotate the base of the mechanism to align the mechanism with the bracket.

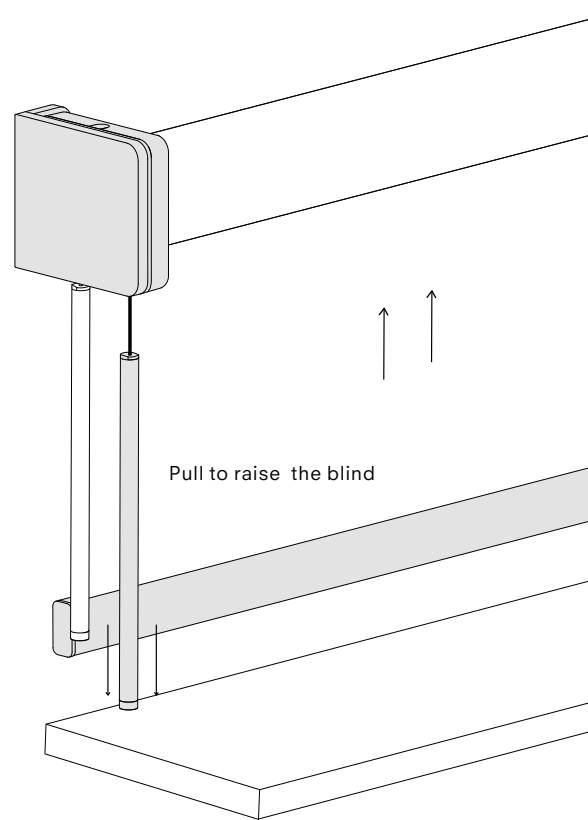
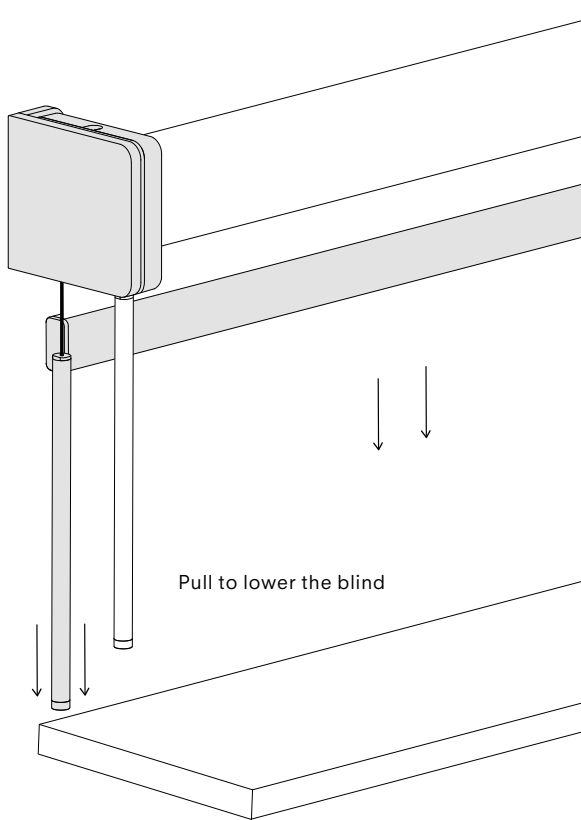


6.
Once the roller blind is secured in the idle end pin, place the control side of the roller blind in the bracket.

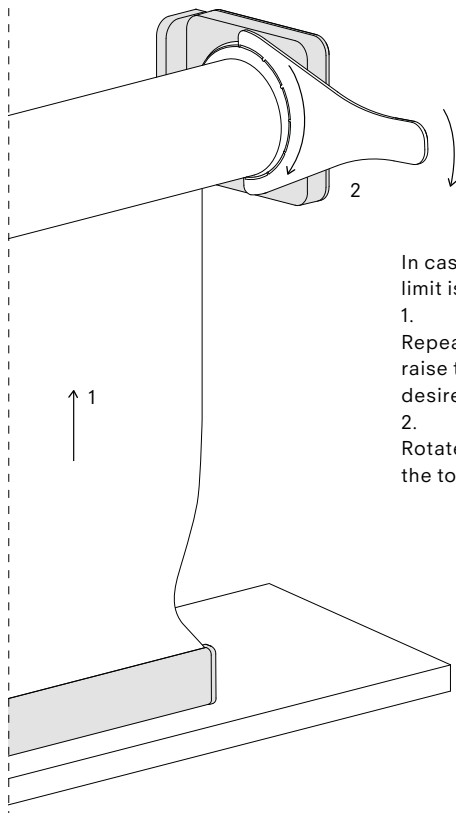


7.
Place the end caps on the brackets.

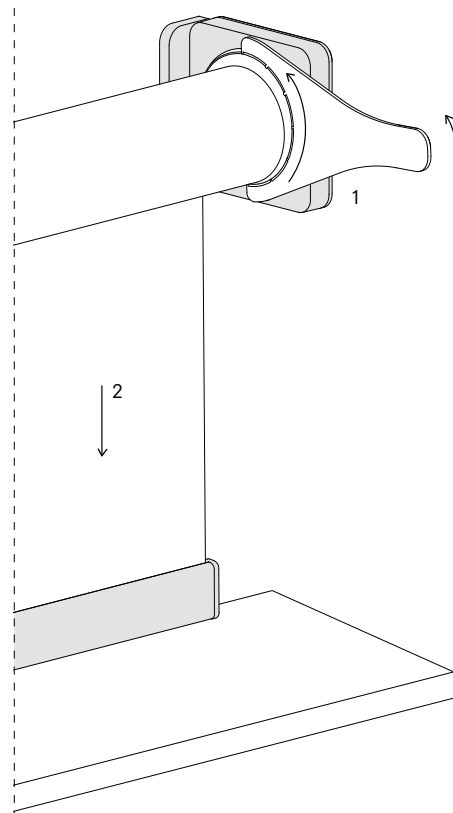
Installation Brackets, Twin Pull



8.
Control the blind. To control the blind simply pull one of the wands to raise or lower the blind



In case the bottom limit is too low:
1. Repeatedly pull to raise the blind in the desired position
2. Rotate the disc with the tool until it stops

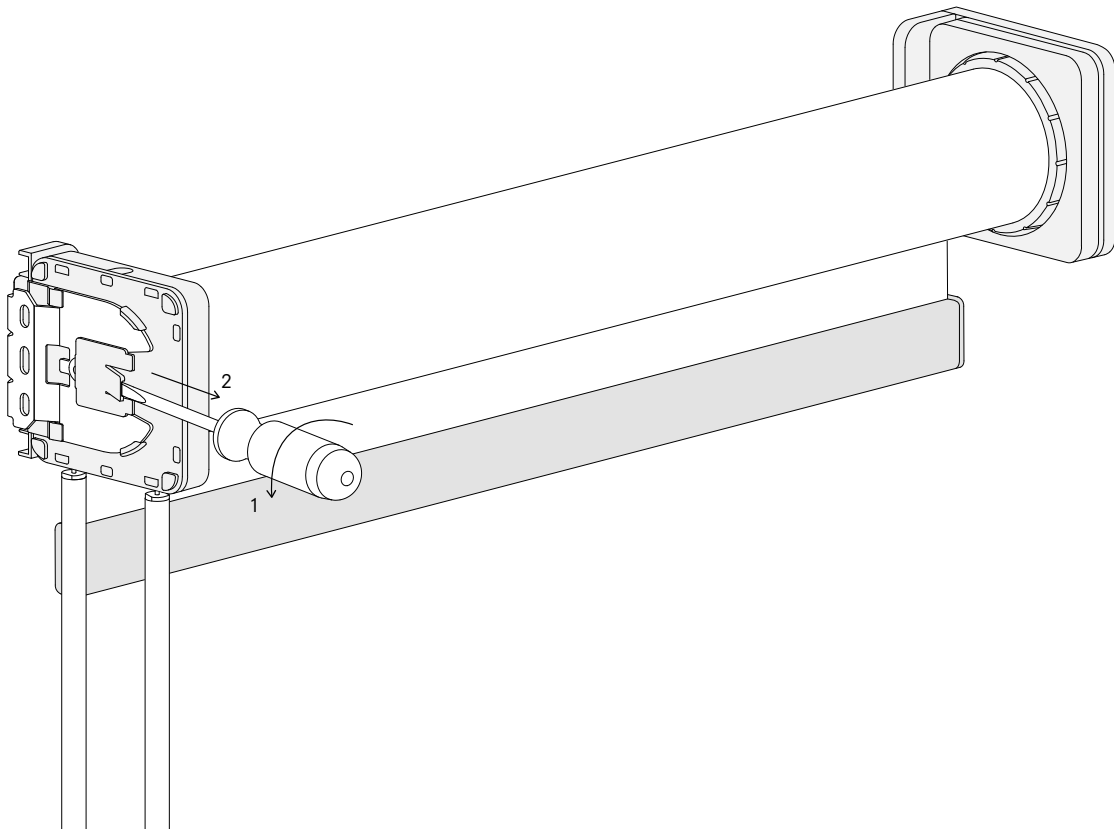
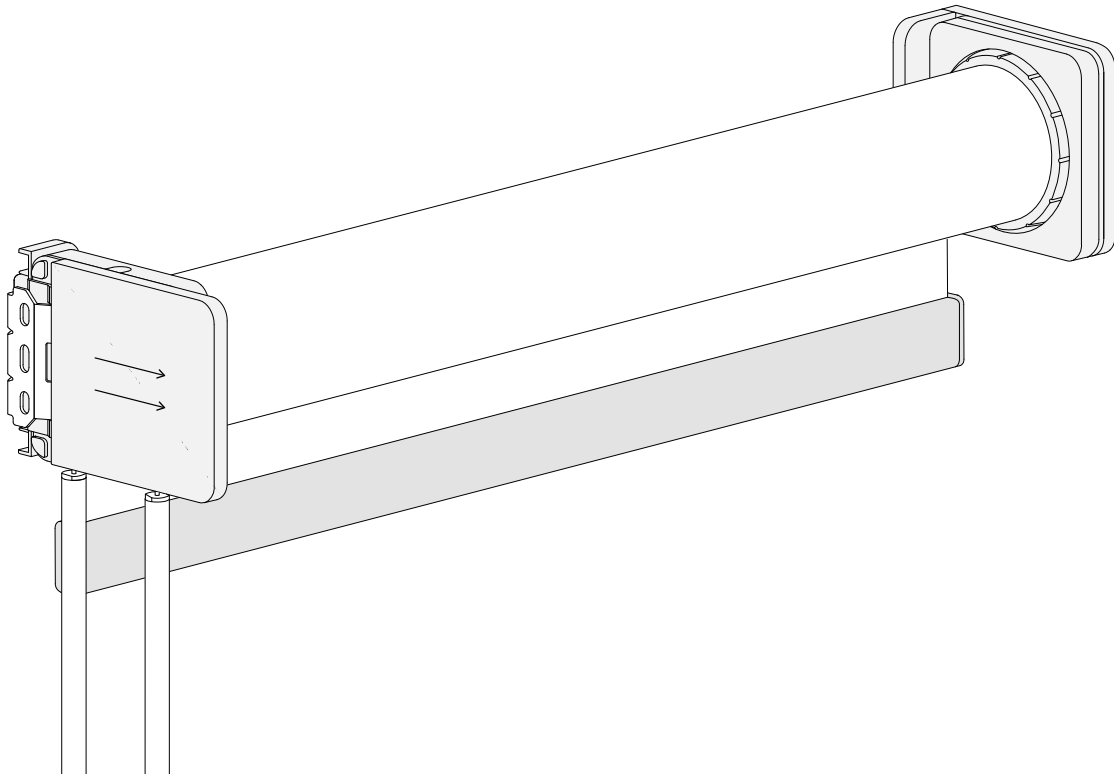


In case the bottom limit is too high:
1. Rotate the disc with the tool to lower the bottom limit
2. Lower the blind and check the position
3. Repeat these steps until the blind has the desired position or following the steps for bottom limit too low

9.
Adjust the bottom limit.

Bottom too high

Removal



10.

To remove the roller blind from the brackets, remove the end cap of the control side and place a screwdriver between the bracket and the mechanism. Twist the screwdriver lightly until the roller blind comes loose.

Installation Semi-open cassette

When installing the roller blind system the following aspects should be taken into consideration, the weight of the rollerblind, the mounting solution and the type and condition of the mounting surface.

The weight of the roller blind system will be dependent upon the specified sizes and chosen operating solution. A 50 cm chain-operated, Semi-open cassette roller blind with 2 m Athos weighs approx. 3.4 kg.

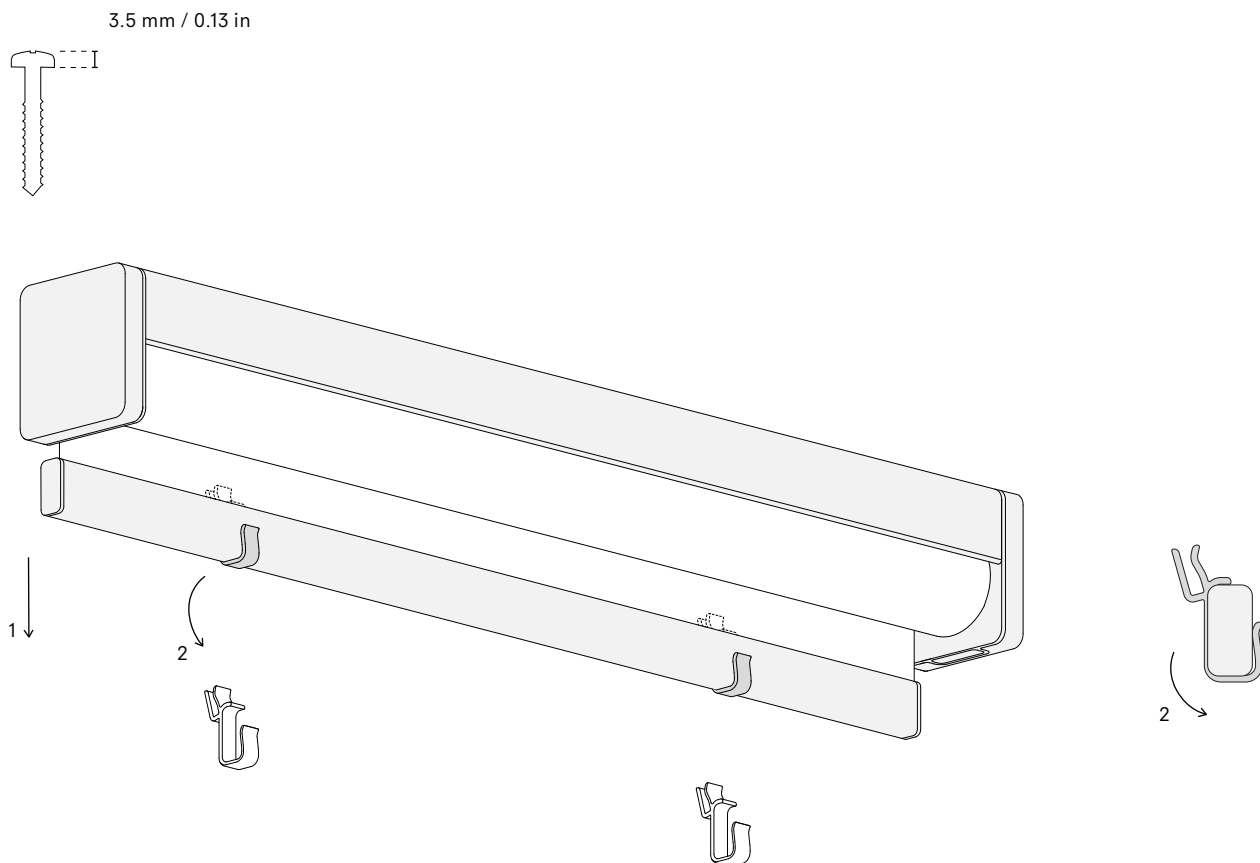
For a typical concrete wall it is recommended to drill a 6 mm hole with a depth of at least 45 mm, with a 6 mm rawlplug and a 4×40 mm screw.

For a typical plaster wall it is recommended to use a 14×39 mm metal plasterboard plug and a 4×40 mm screw.

For porous walls it is recommended to drill a 6 mm hole with a depth of at least 45 mm, with a 2-component injection fixing and a 4×40 mm screw.

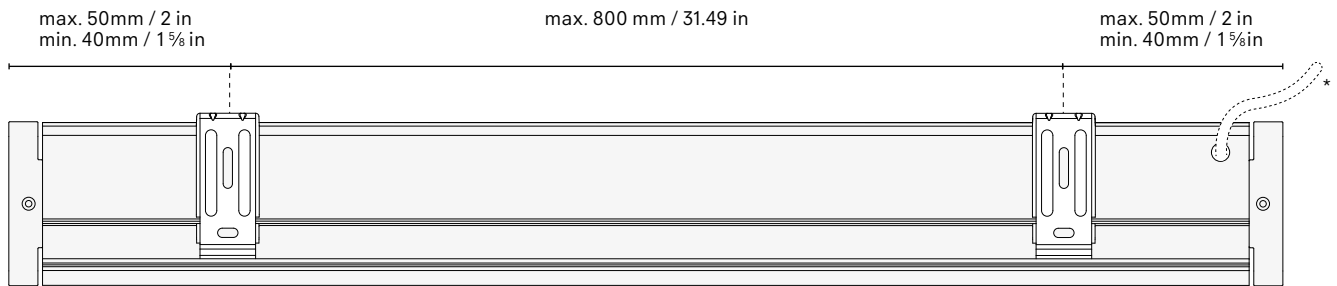
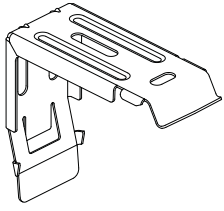
Please note: The mounting solution(s) must be assessed by a professional on site in order to ensure that this is suitable for the mounting surface(s) in question.

The rail needs to be perfectly level. If not, the textile may be damaged when the roller blind is used.

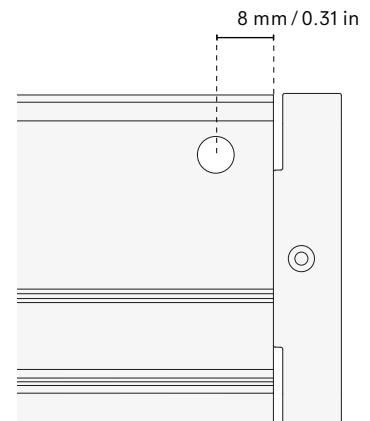
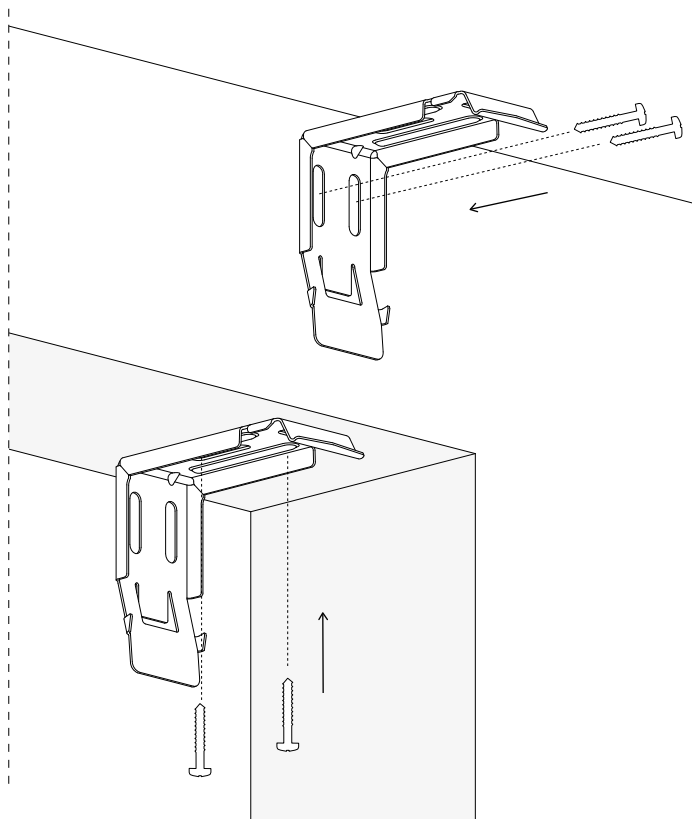


1. Please remove the transport clips from the bottom rail before installation.

Installation Semi-open cassette

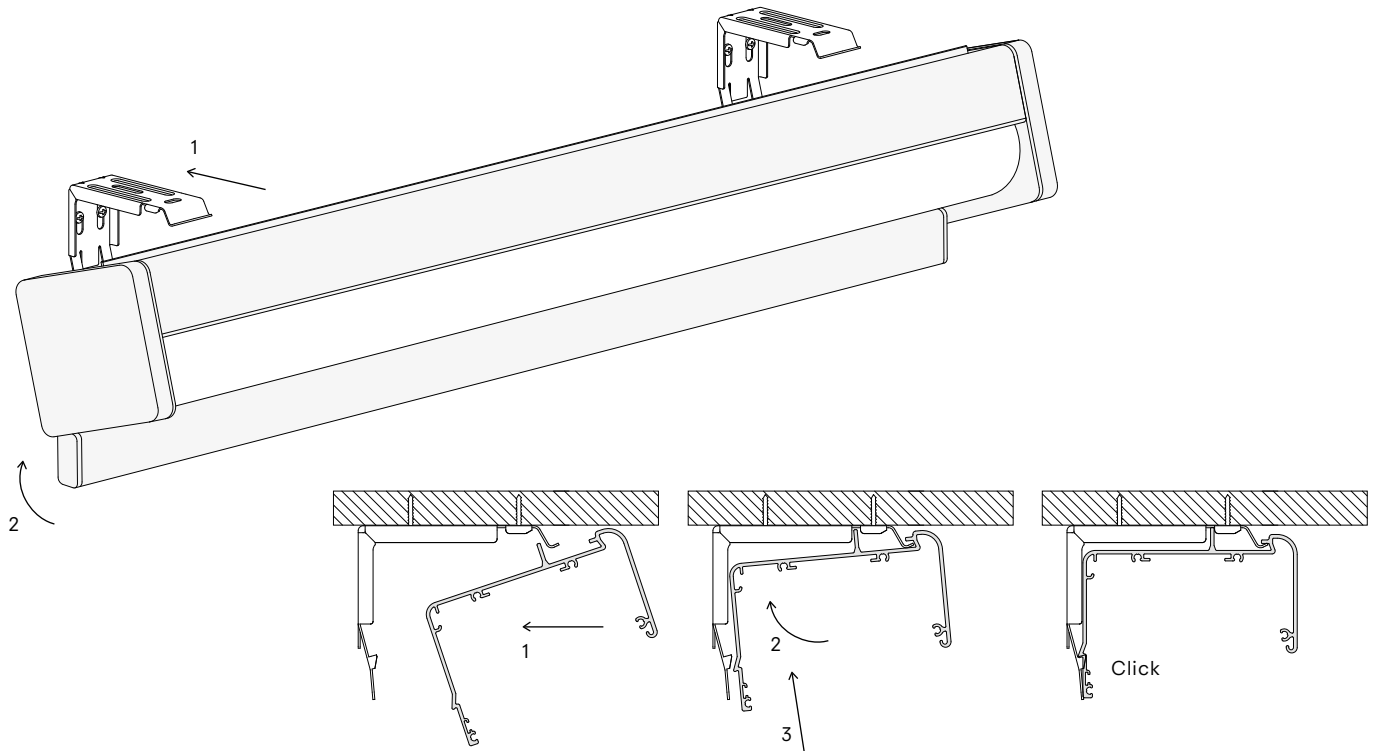


*Cable exit can be on the left or on the right. For motor operated systems only.

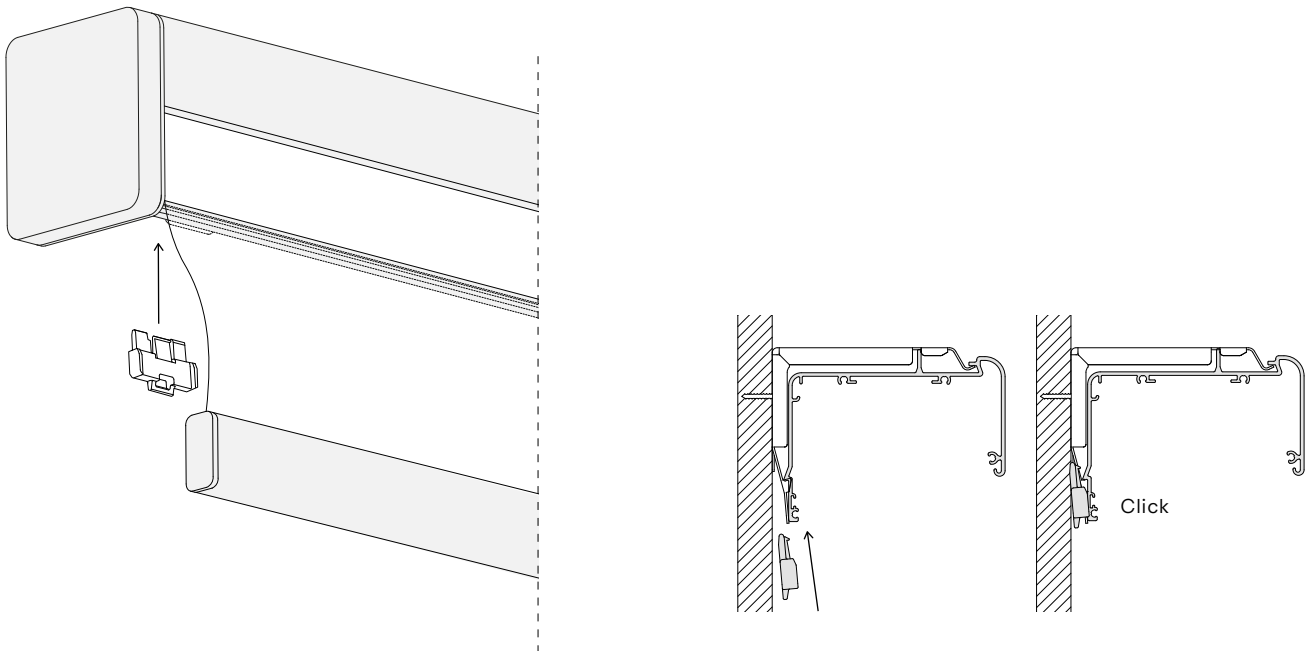


2. Locate the desired position and height of the mounting rail. When mounting it, ensure that the brackets are placed with a minimum of 40 mm and a maximum of 50 mm from the end of the cassette and the space between the brackets is maximum 800 mm.

Installation Semi-open cassette



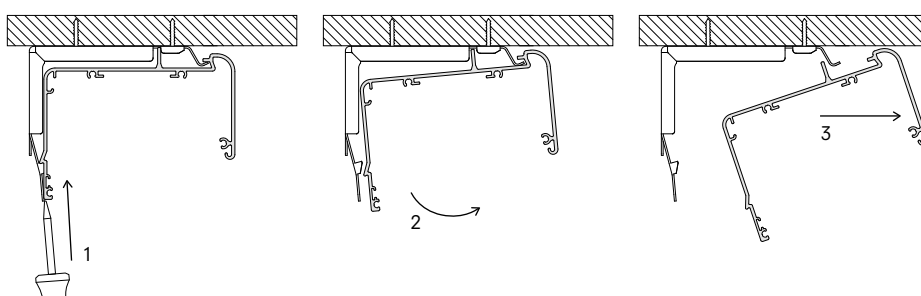
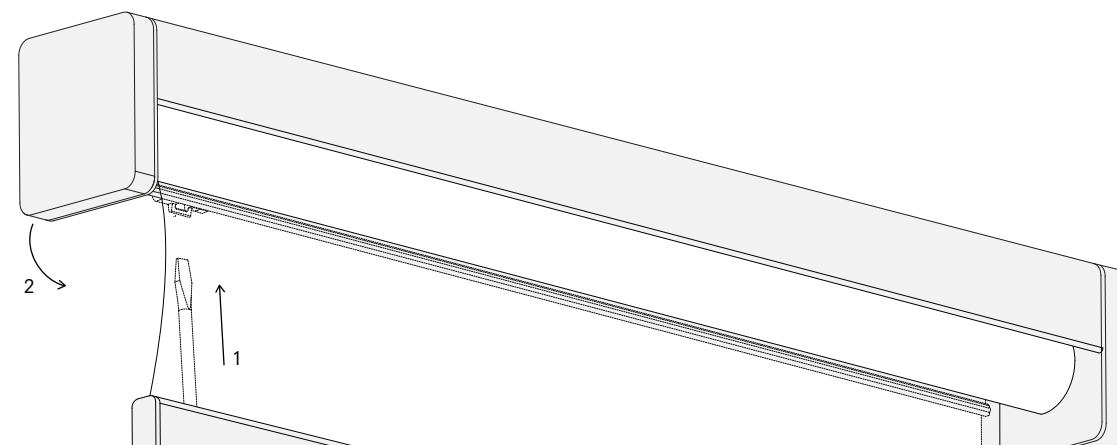
3.
When the mounting rail is secured, click the cassette on to the rail.
Please make sure that you hear a 'click', as it indicates that the clips
on the back of the cassette are securely fastened to the mounting rail.



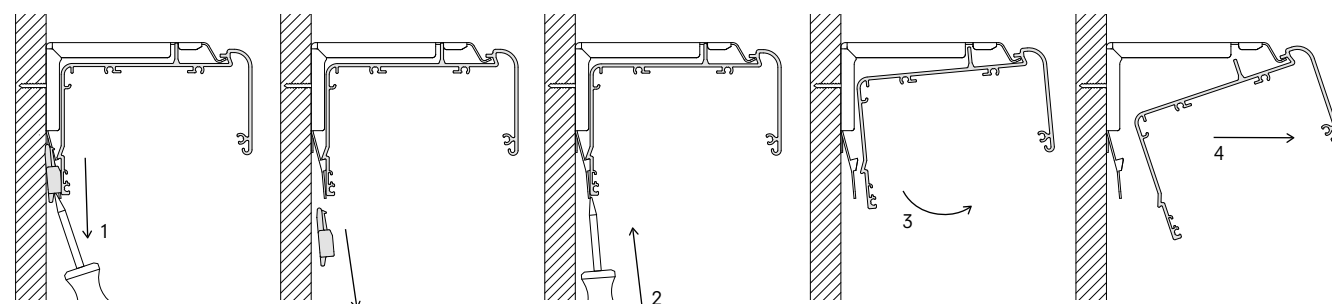
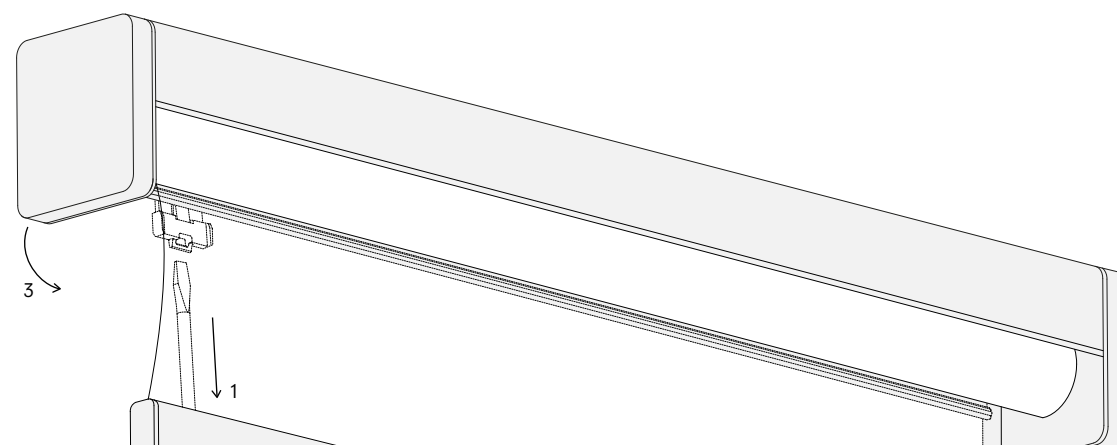
4.
In case of wall mounting, click in the stability block. Please make sure
that you hear a 'click', as it indicates that the clip is securely fastened.

For correct installation, ensure that all of the clips on the cassette
click on to the mounting rail.

Removal



5.
To remove the cassette from the mounting rail, place a screwdriver between the bracket and the cassette. Twist the screwdriver lightly until the cassette comes loose from the bracket.



6.
In case of wall mounting, make sure to remove the stability block with a screwdriver before removing the cassette.

Installation Closed cassette

When installing the roller blind system the following aspects should be taken into consideration, the weight of the rollerblind, the mounting solution and the type and condition of the mounting surface.

The weight of the roller blind system will be dependent upon the specified sizes and chosen operating solution. A 50 cm chain-operated, Semi-open cassette roller blind with 2 m Athos weighs approx. 3.4 kg.

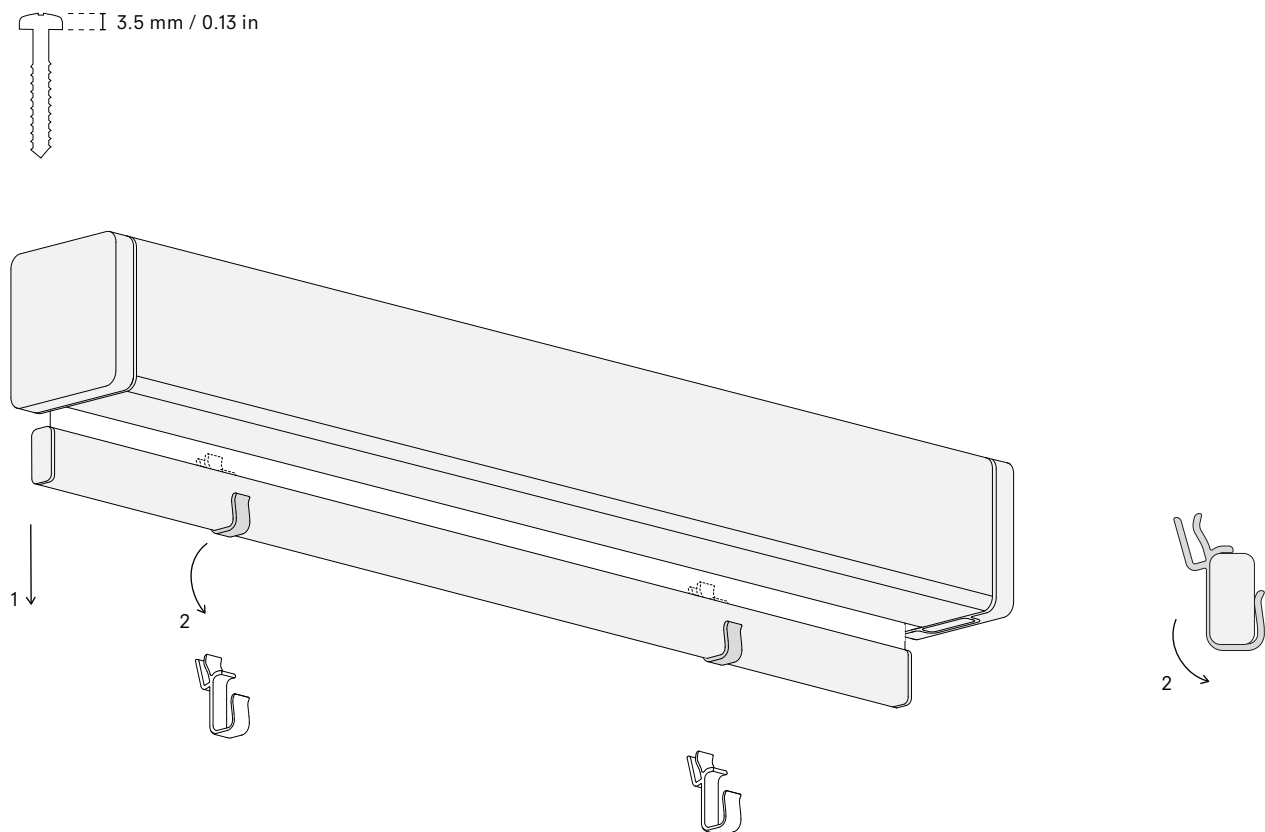
For a typical concrete wall it is recommended to drill a 6 mm hole with a depth of at least 45 mm, with a 6 mm rawlplug and a 4×40 mm screw.

For a typical plaster wall it is recommended to use a 14×39 mm metal plasterboard plug and a 4×40 mm screw.

For porous walls it is recommended to drill a 6 mm hole with a depth of at least 45 mm, with a 2-component injection fixing and a 4×40 mm screw.

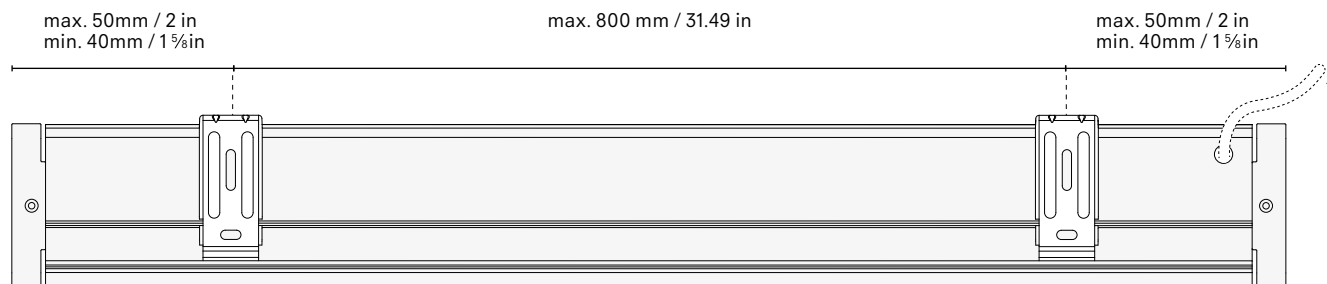
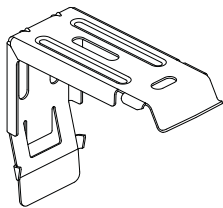
Please note: The mounting solution(s) must be assessed by a professional on site in order to ensure that this is suitable for the mounting surface(s) in question.

The rail needs to be perfectly level. If not, the textile may be damaged when the roller blind is used.

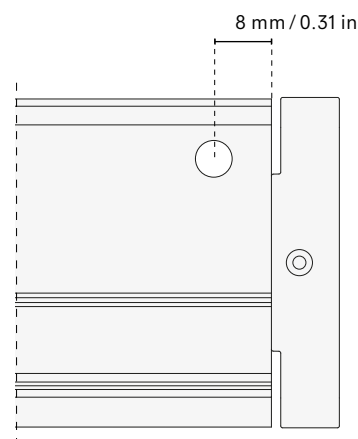
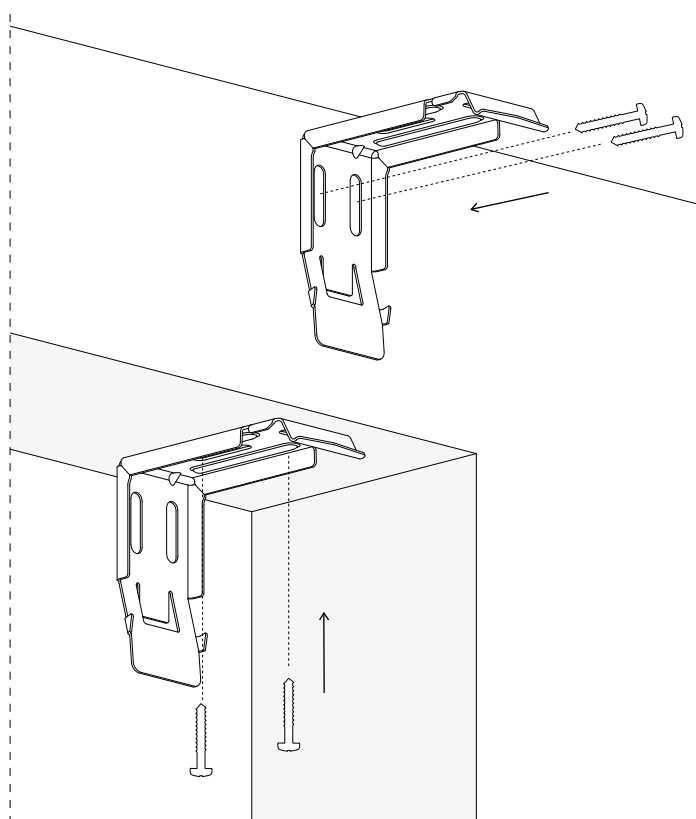


1. Please remove the transport clips from the bottom rail before installation.

Installation Closed cassette

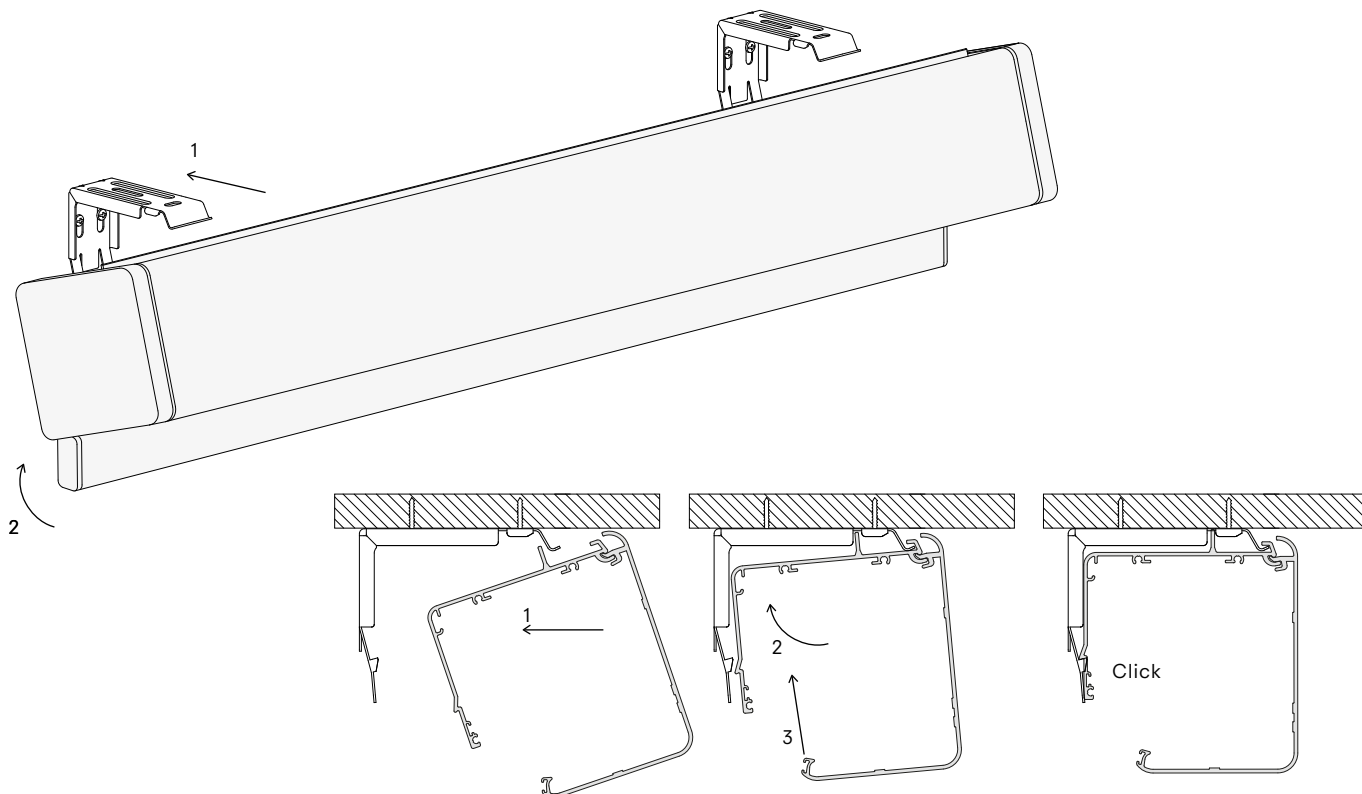


*Cable exit can be on the left or on the right. For motor operated systems only.

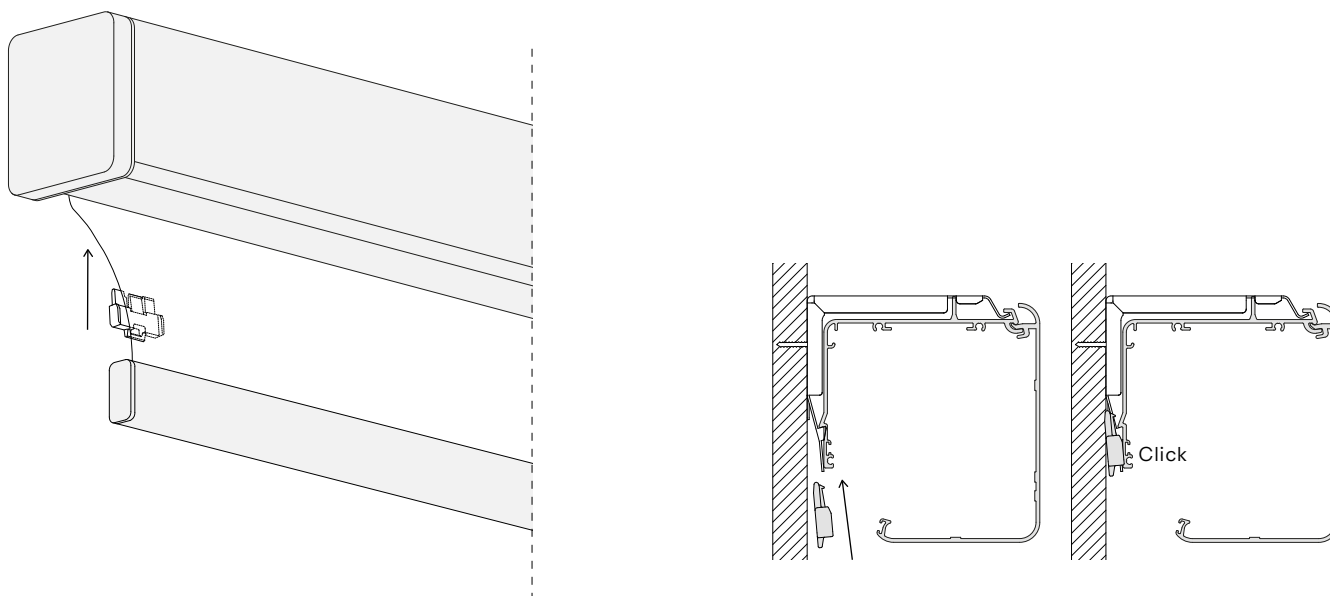


2. Locate the desired position and height of the mounting rail. When mounting it, ensure that the brackets are placed with a minimum of 40 mm and a maximum of 50 mm from the end of the cassette and the space between the brackets is maximum 800 mm.

Installation Closed cassette



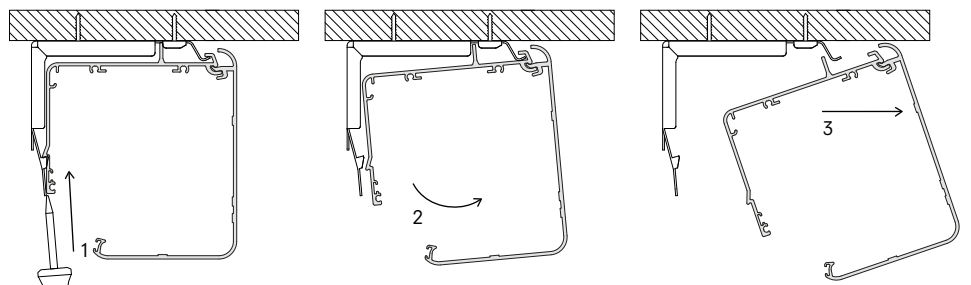
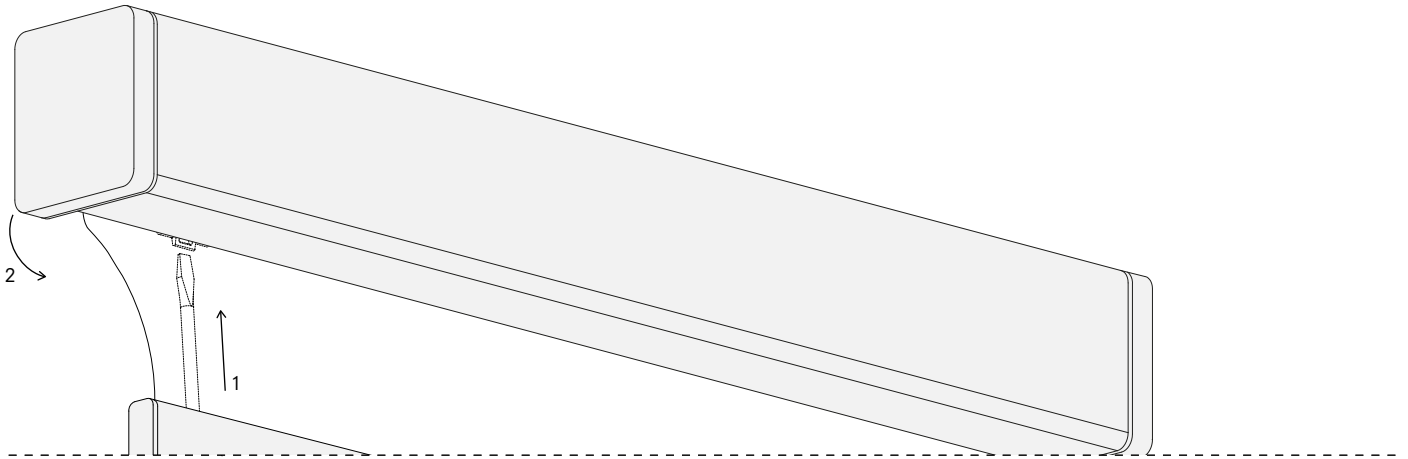
3.
When the mounting rail is secured, click the cassette on to the rail.
Please make sure that you hear a 'click', as it indicates that the clips
on the back of the cassette are securely fastened to the mounting rail.



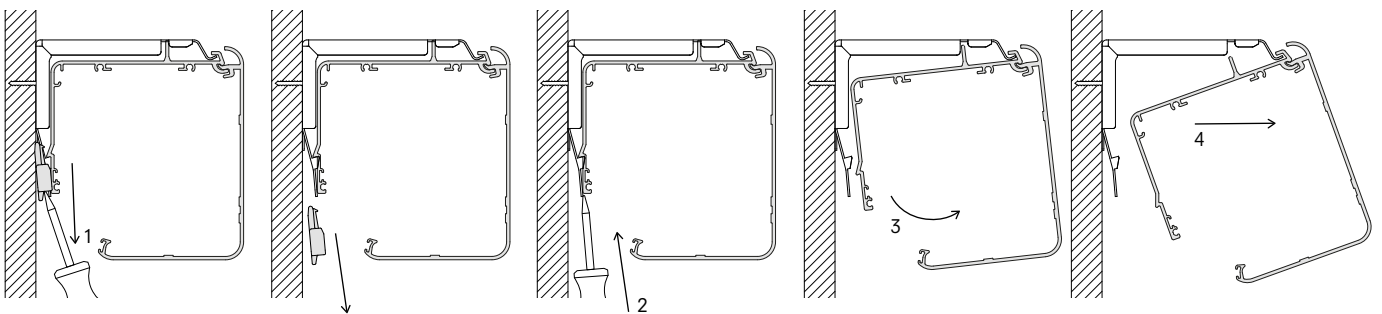
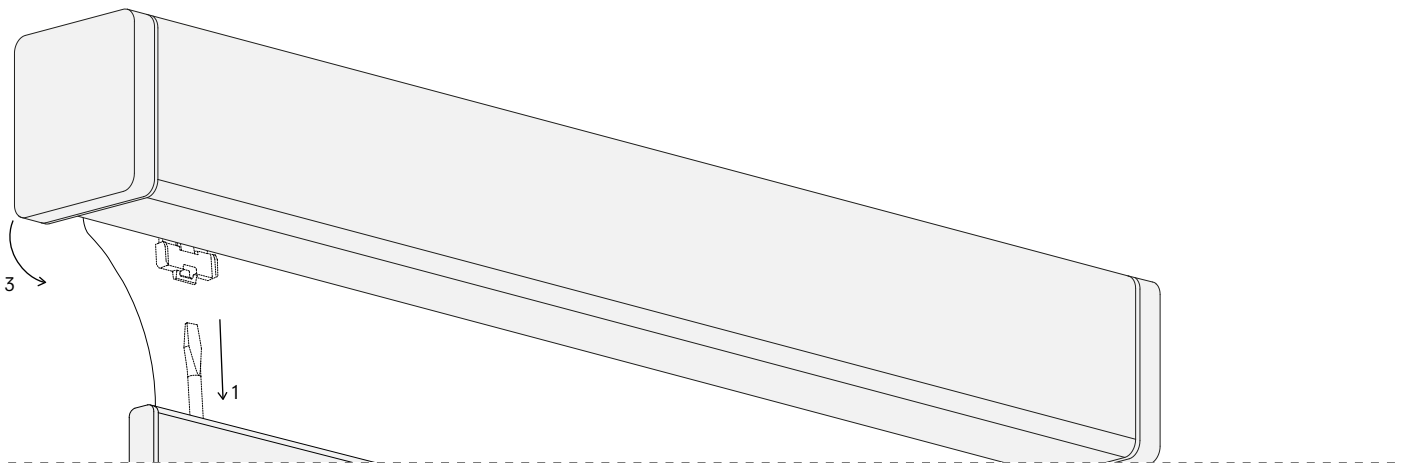
4.
In case of wall mounting, click in the stability block. Please make sure
that you hear a 'click', as it indicates that the clip is securely fastened.

For correct installation, ensure that all of the clips on the cassette
click on to the mounting rail.

Removal

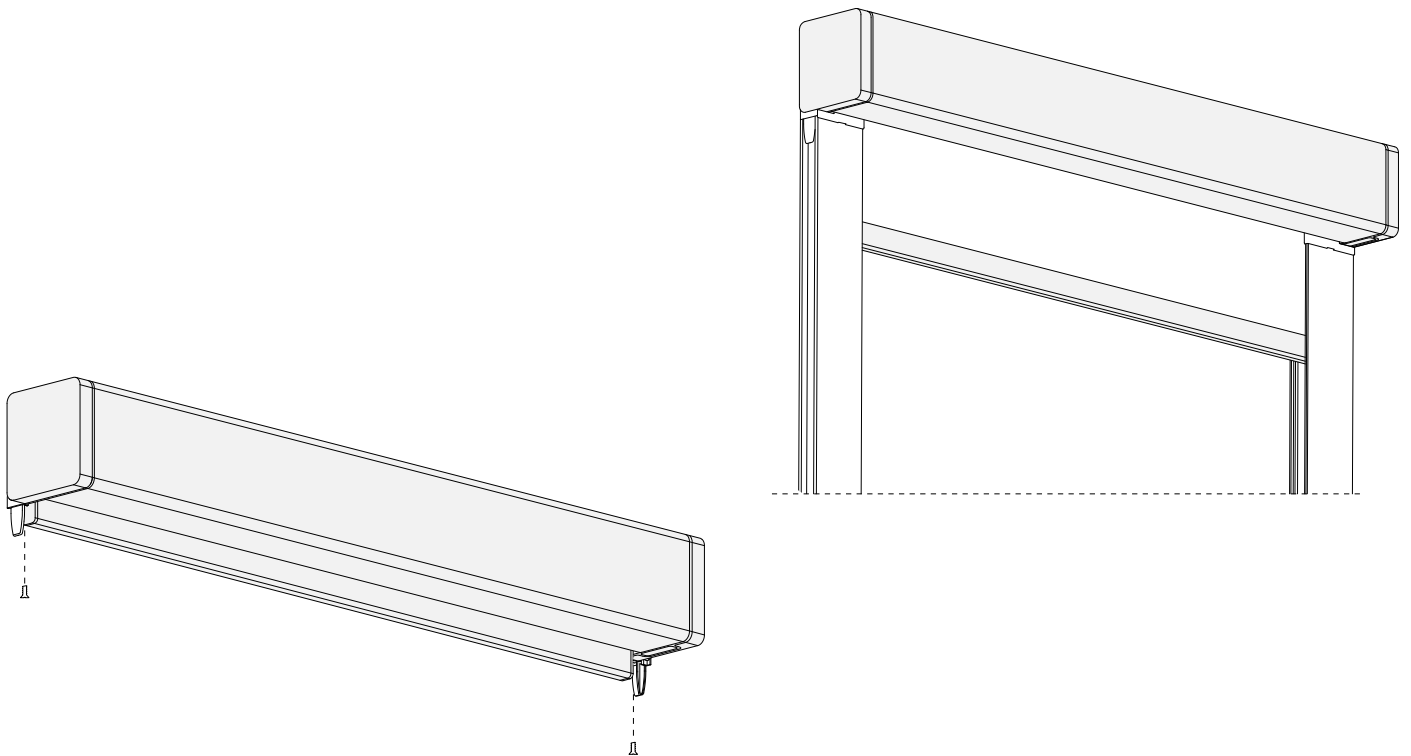


5.
To remove the cassette from the mounting rail, place a screwdriver between the bracket and the cassette. Twist the screwdriver lightly until the cassette comes loose from the bracket.

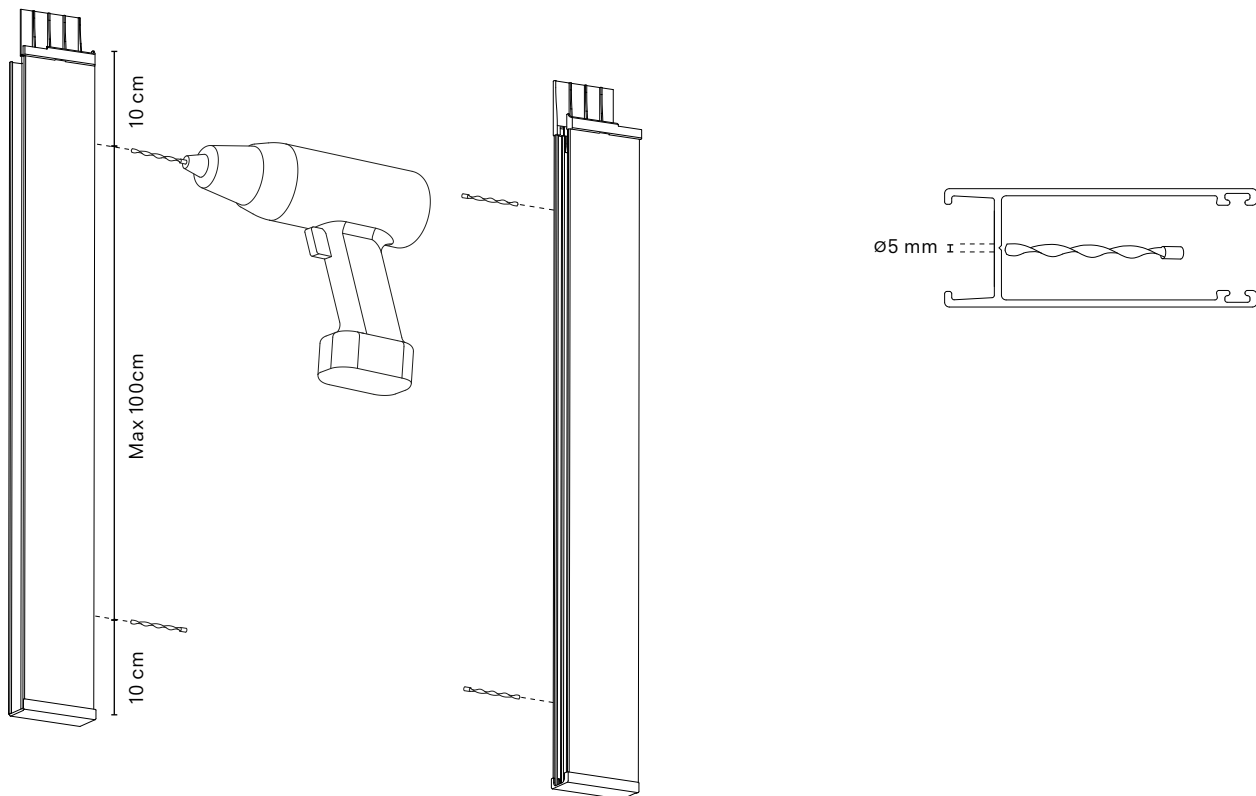


6.
In case of wall mounting, make sure to remove the stability block with a screwdriver before removing the cassette.

Installation Profile side guide, in the recess

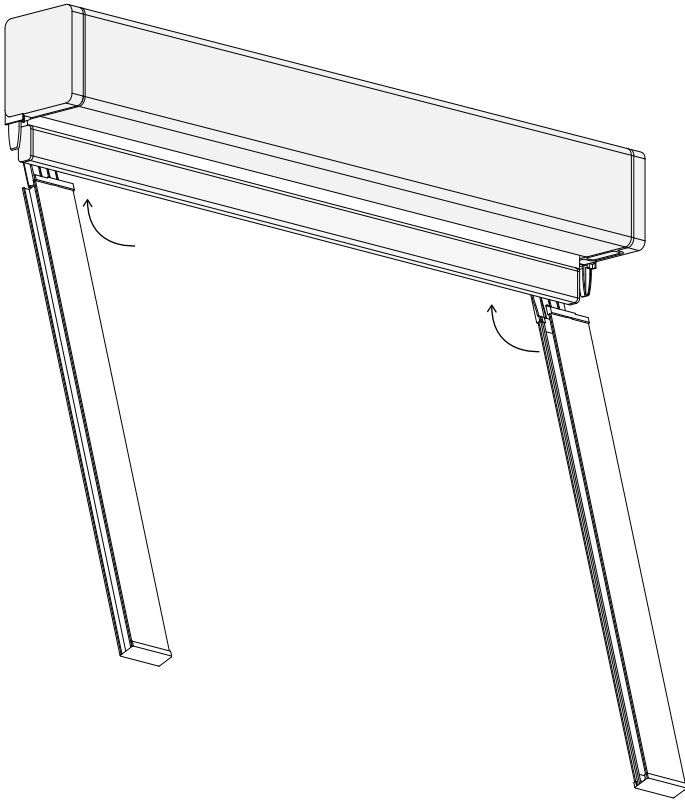


1.
When the Cassette is installed, mount the side profile connectors
on the end-caps

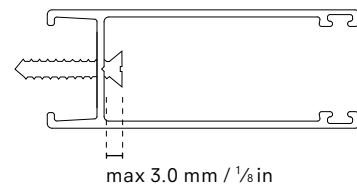
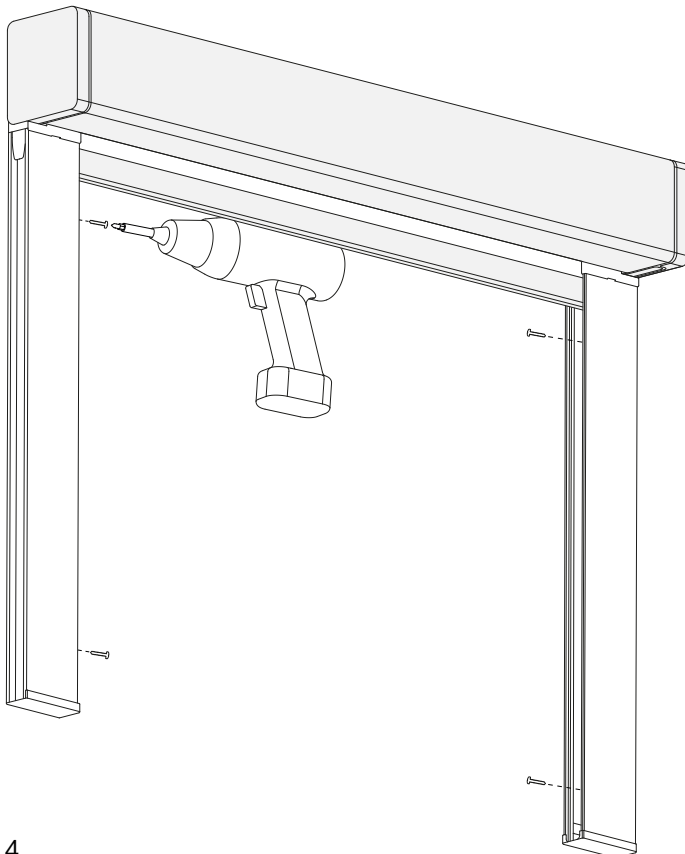


2.
Mark the places for the drill holes on the side profiles. When drilling it,
ensure that the holes are placed 10 cm from the end of the mounting
profiles. The maximum space between the holes is 100 cm.
Please note: use a drill of 5 mm

Installation Profile side guide, in the recess

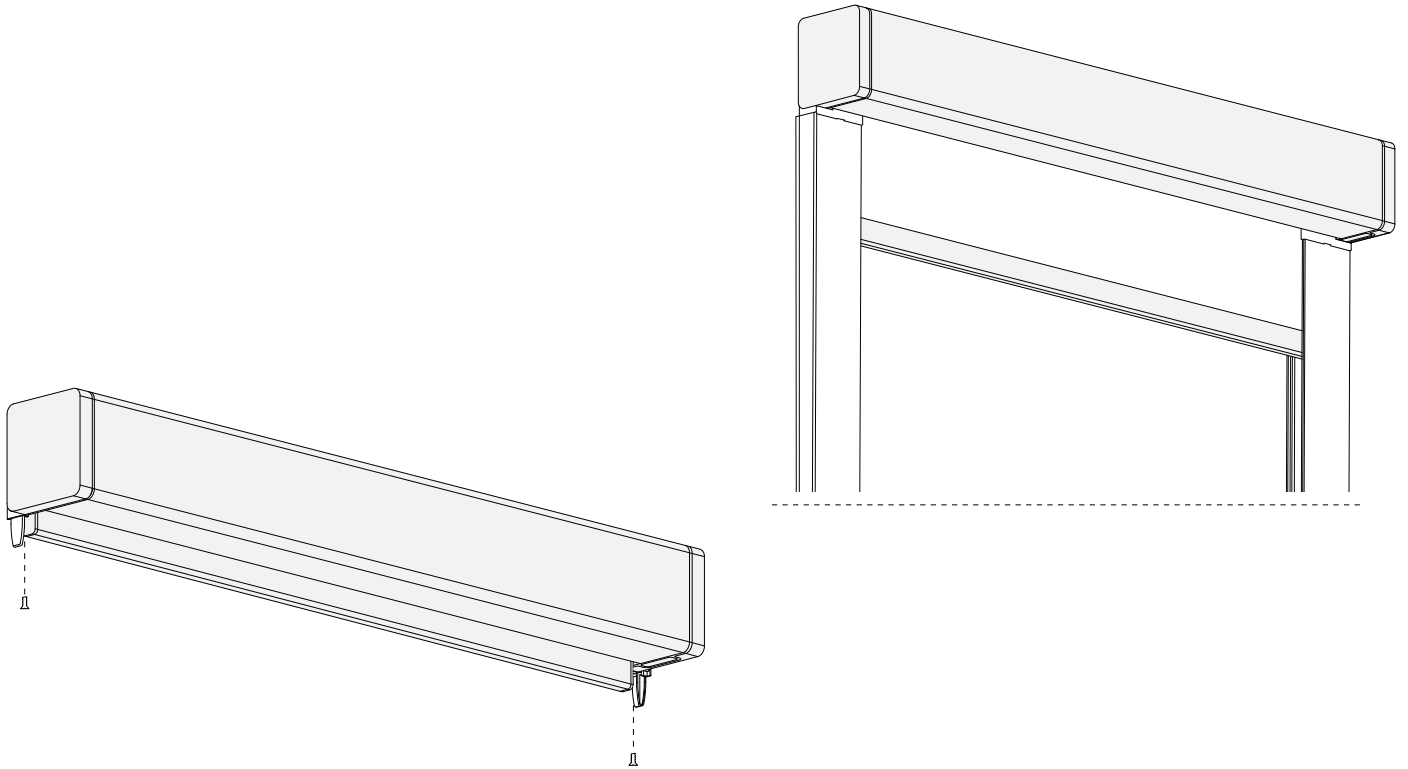


3.
Slide the side profiles against the connectors. Make sure that the bottombar is inside the profile and that the profile top endcap is placed at the back of the cassette.

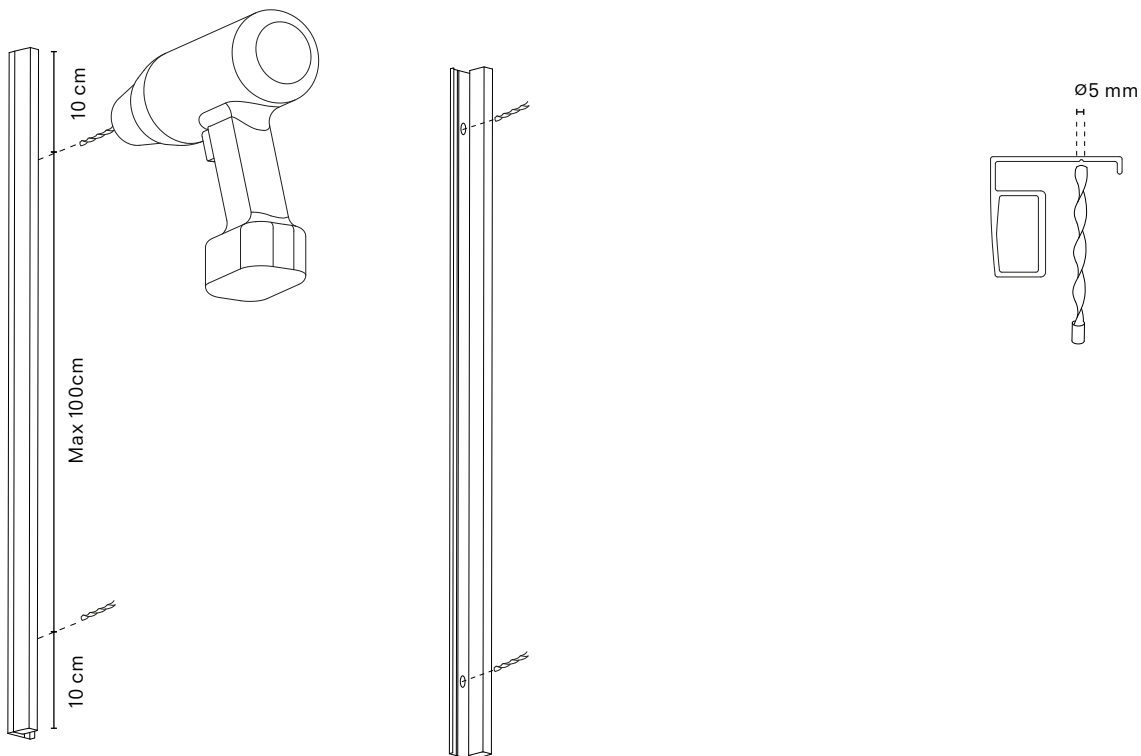


4.
Mount the side profiles in the recess.
Please note: the head of the screws can be max 3.0 mm ($\frac{1}{8}$ in) height

Installation Profile side guide, on the recess

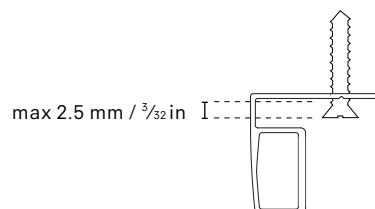
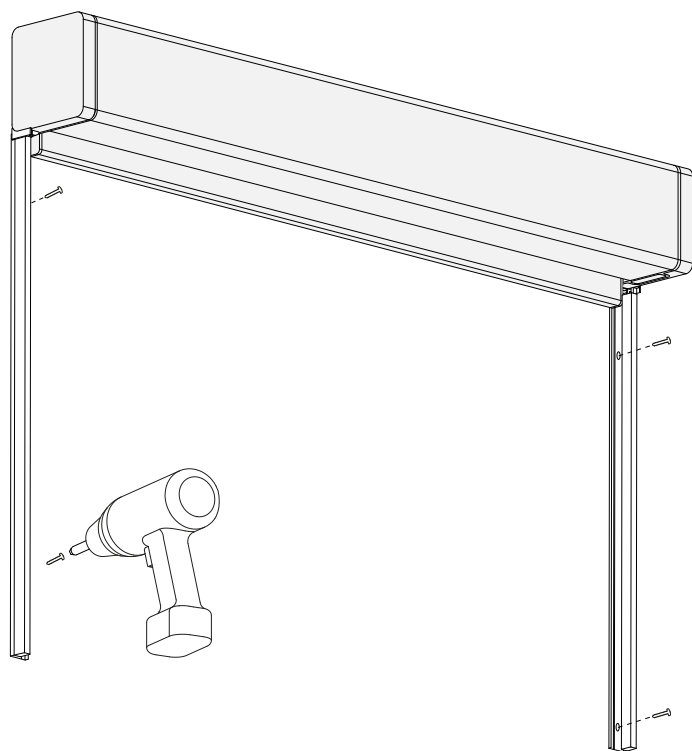


1. When the Cassette is installed, mount the side profile connectors on the end-caps



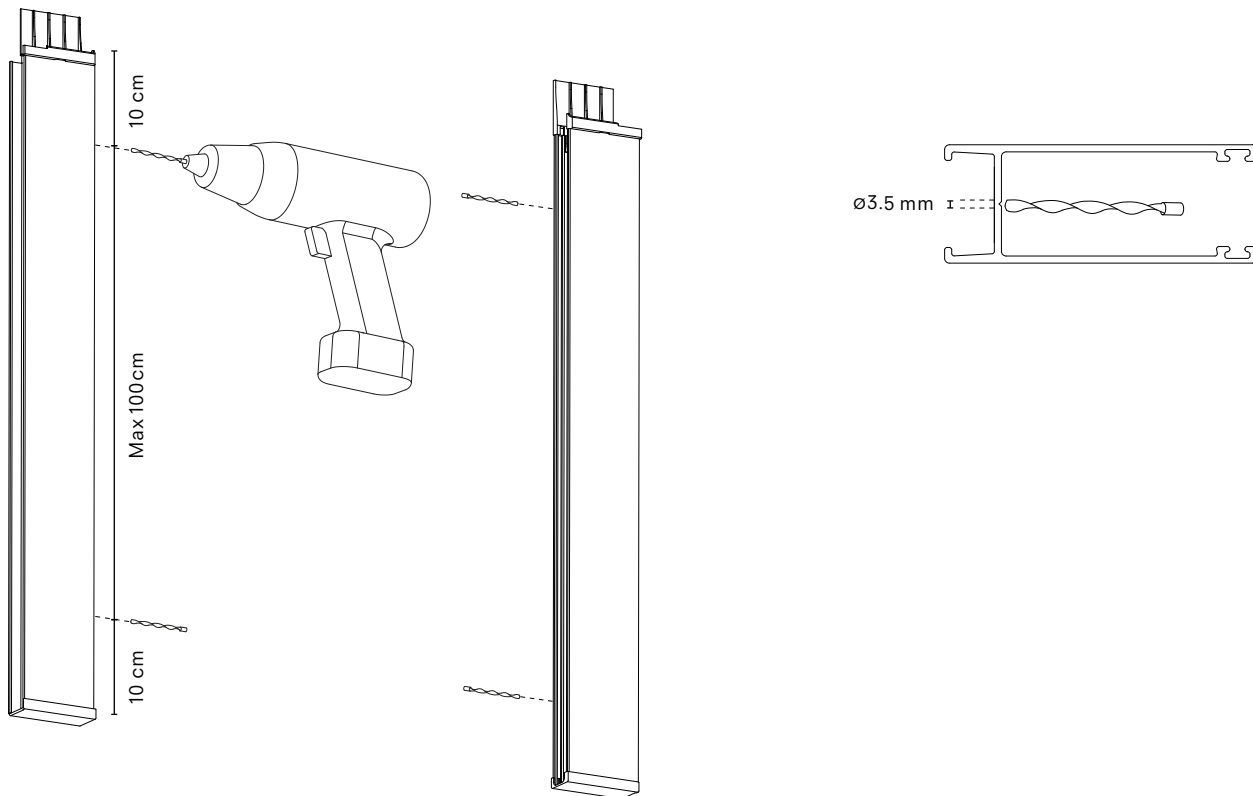
2. Mark the places for the drill holes on the mounting profiles. When drilling it, ensure that the holes are placed 10 cm from the end of the mounting profiles. The maximum space between the holes is 100 cm.
Please note: use a drill of 5 mm

Installation Profile side guide, on the recess



3.
Mount the mounting profiles.
Please note: the head of the screws can be max 2.5 mm ($\frac{3}{32}$ in) height.

Installation Profile side guide, on the recess



4.

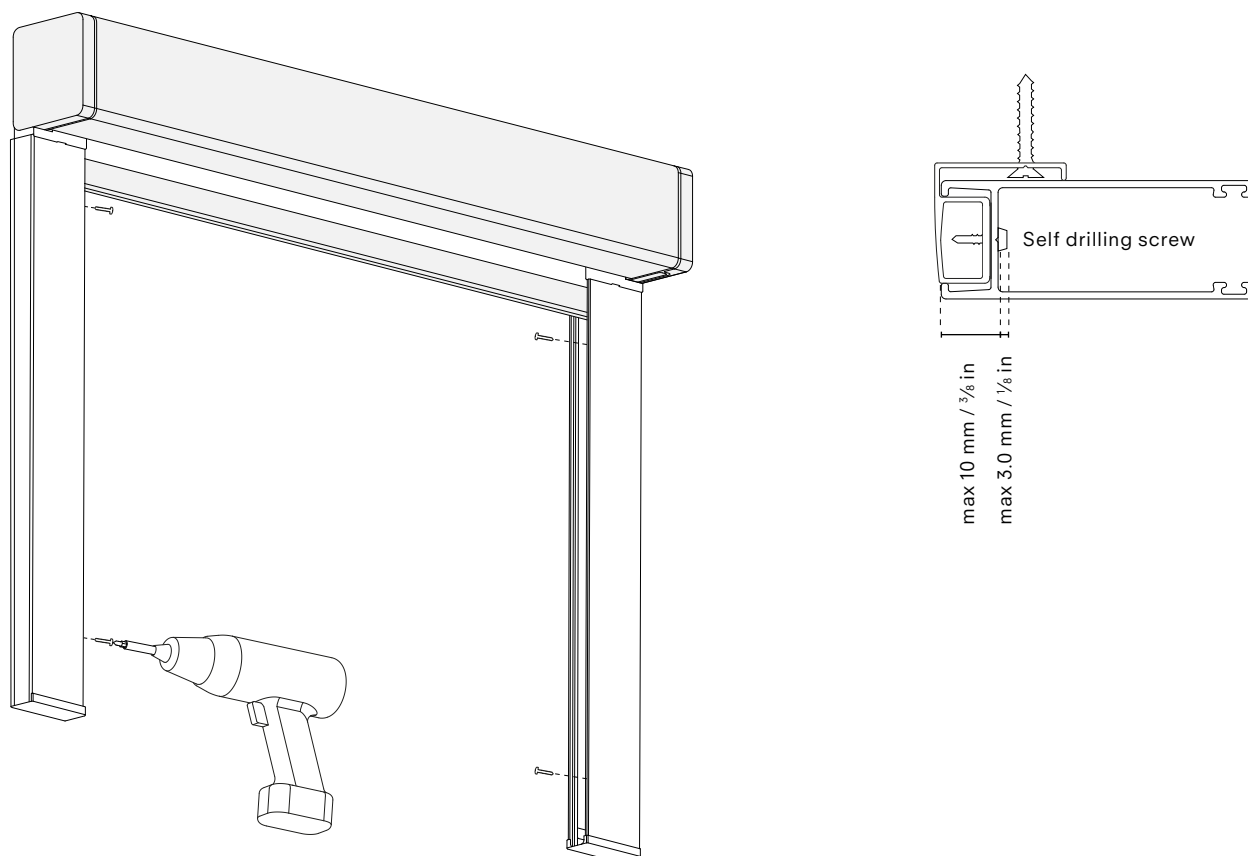
Mark the places for the drill holes on the side profiles. When drilling it, ensure that the holes are placed 10 cm from the end of the side profiles. The maximum space between the holes is 100 cm. Please note: use a drill of 3.5 mm



5.

Slide the side profiles on the mounting profiles. Make sure that the bottombar is inside the profile and that the profile top endcap is placed at the back of the cassette.

Installation Profile side guide, on the recess



6.
Mount the side profiles on the mounting profiles by using self drilling screws. Please note: the head of the screws can be max 3.0 mm (1/8 in) height, and the length of the screws can be max 10 mm (3/8 in)

Installation Cable side guide

When installing the roller blind system the following aspects should be taken into consideration, the weight of the rollerblind, the mounting solution and the type and condition of the mounting surface.

The weight of the roller blind system will be dependent upon the specified sizes and chosen operating solution. A 50 cm chain-operated, Semi-open cassette roller blind with 2 m Athos weighs approx. 3.4 kg.

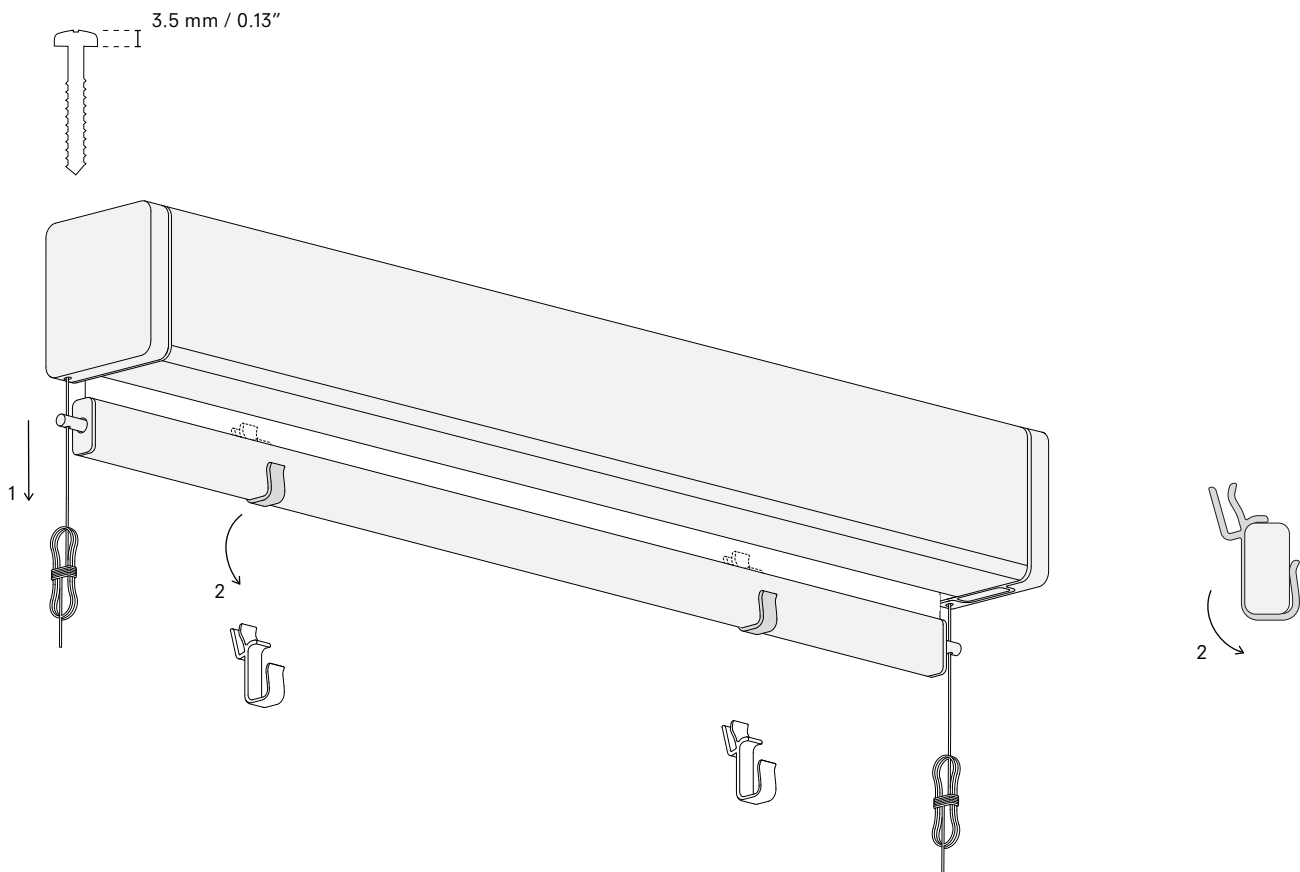
For a typical concrete wall it is recommended to drill a 6 mm hole with a depth of at least 45 mm, with a 6 mm rawlplug and a 4×40 mm screw.

For a typical plaster wall it is recommended to use a 14×39 mm metal plasterboard plug and a 4×40 mm screw.

For porous walls it is recommended to drill a 6 mm hole with a depth of at least 45 mm, with a 2-component injection fixing and a 4×40 mm screw.

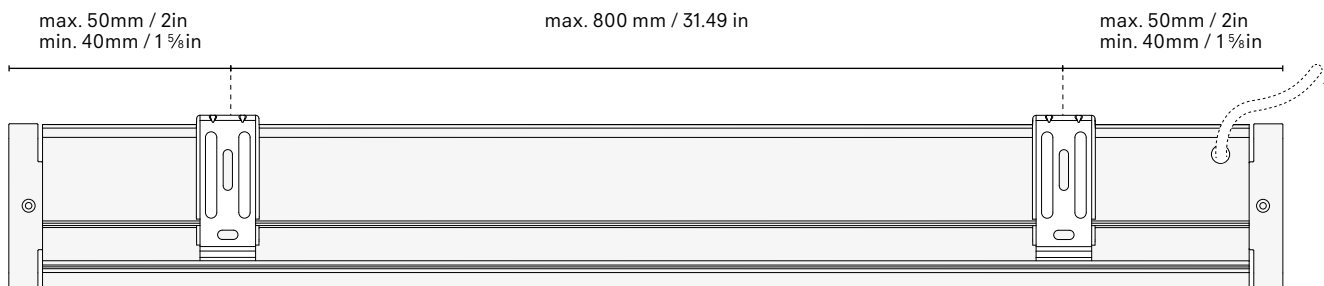
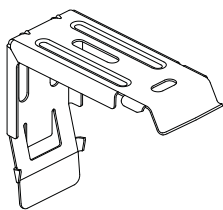
Please note: The mounting solution(s) must be assessed by a professional on site in order to ensure that this is suitable for the mounting surface(s) in question.

The rail needs to be perfectly level. If not, the textile may be damaged when the roller blind is used.

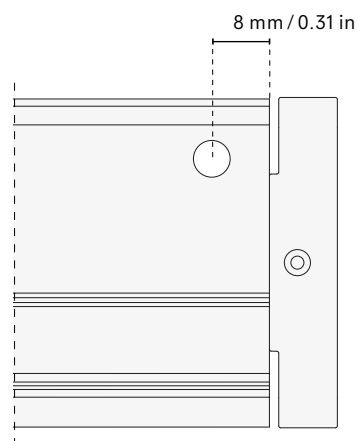
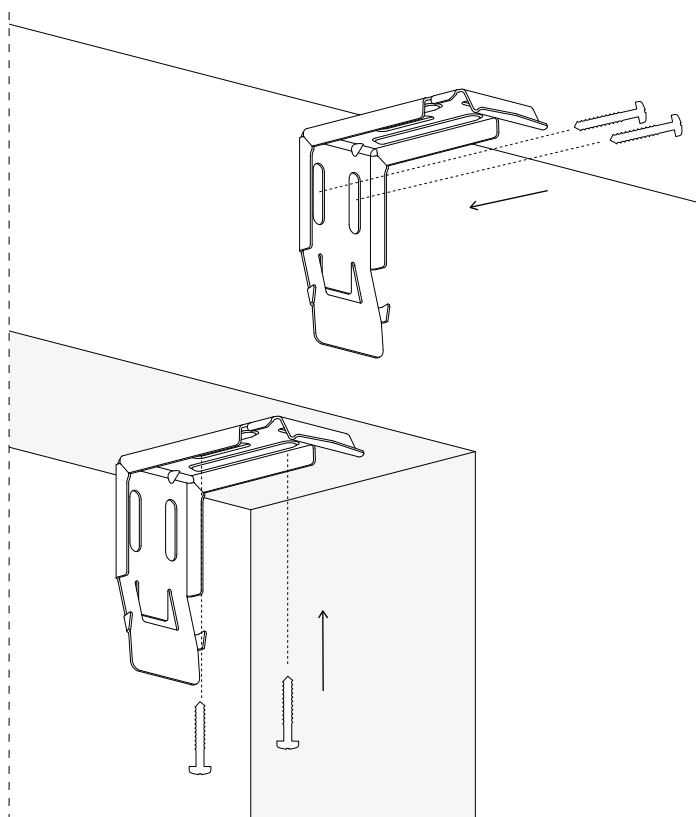


1. Please remove the transport clips from the bottom rail before installation.

Installation Cable side guide

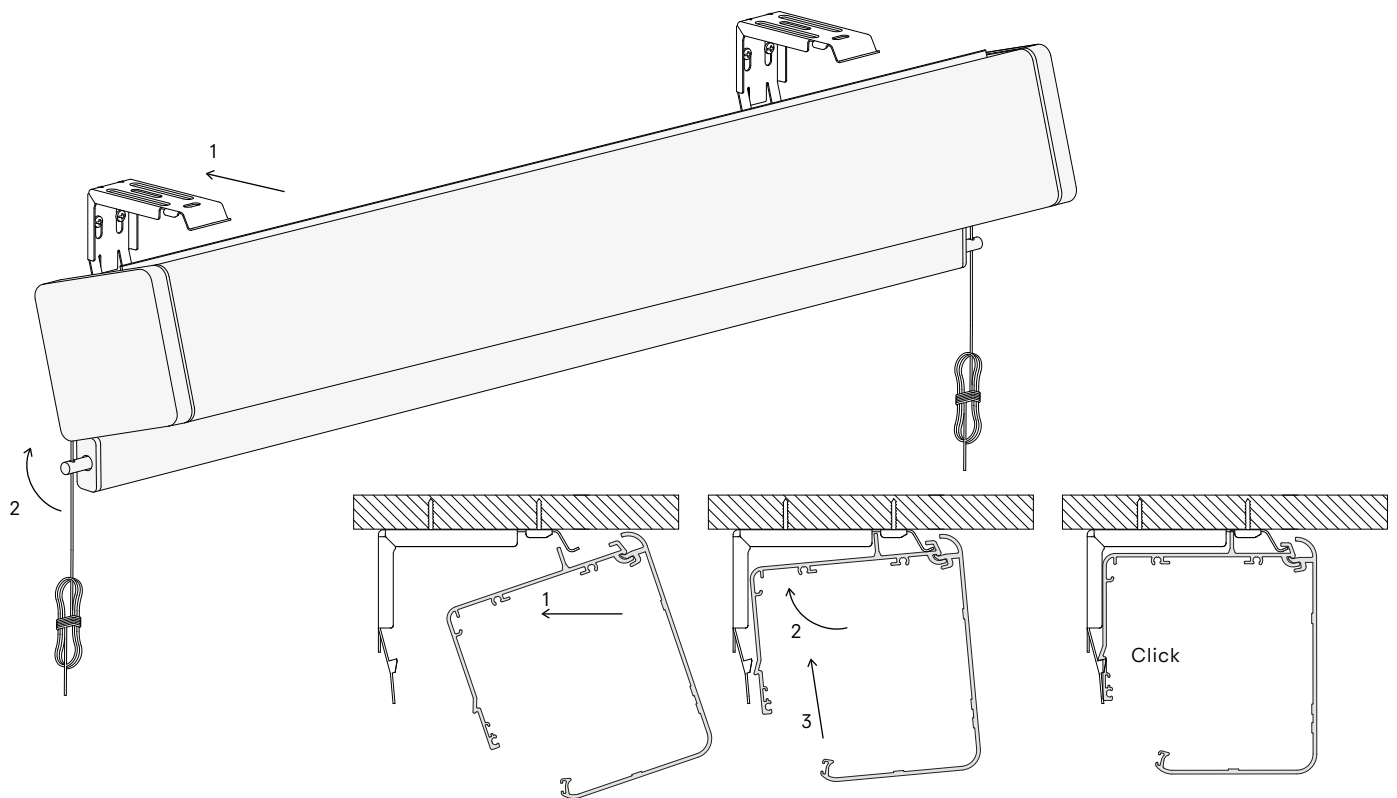


*Cable exit can be on the left or on the right. For motor operated systems only.

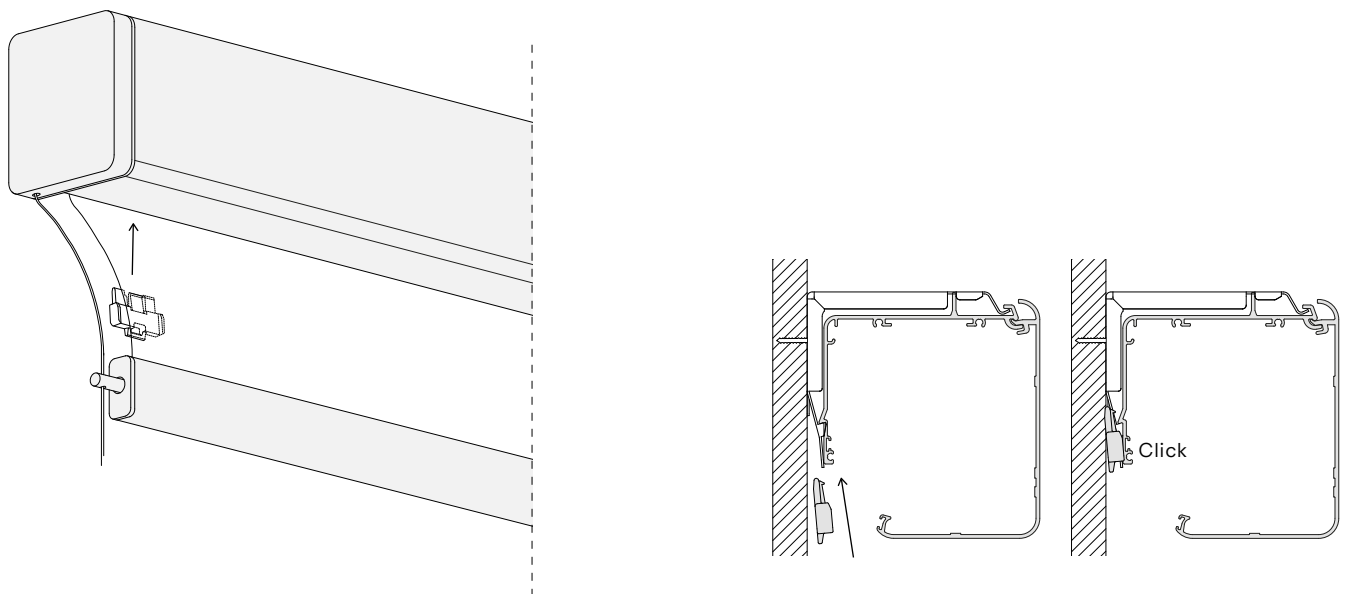


2. Locate the desired position and height of the mounting rail. When mounting it, ensure that the brackets are placed with a minimum of 40 mm and a maximum of 50 mm from the end of the cassette and the space between the brackets is maximum 800 mm.

Installation Cable side guide



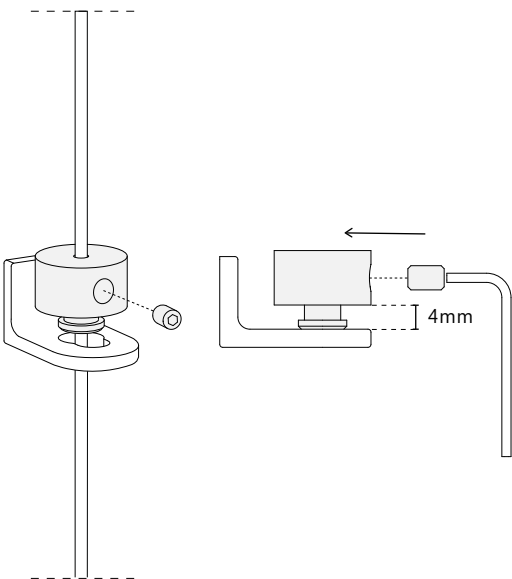
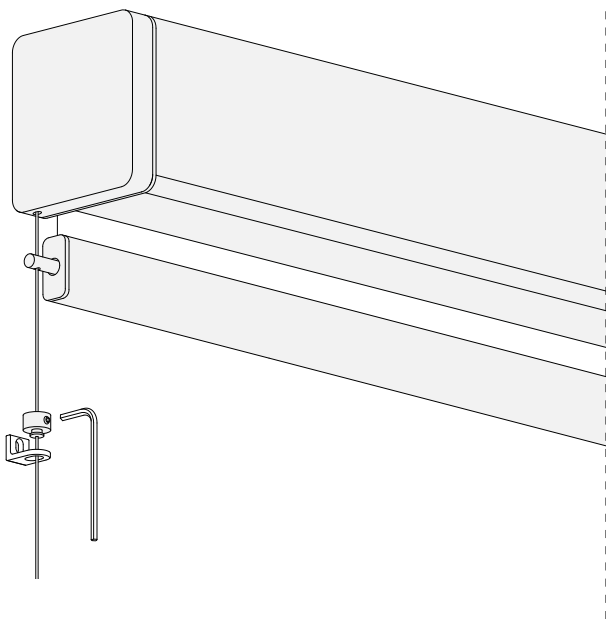
3.
When the mounting rail is secured, click the cassette on to the rail.
Please make sure that you hear a 'click', as it indicates that the clips
on the back of the cassette are securely fastened to the mounting rail.



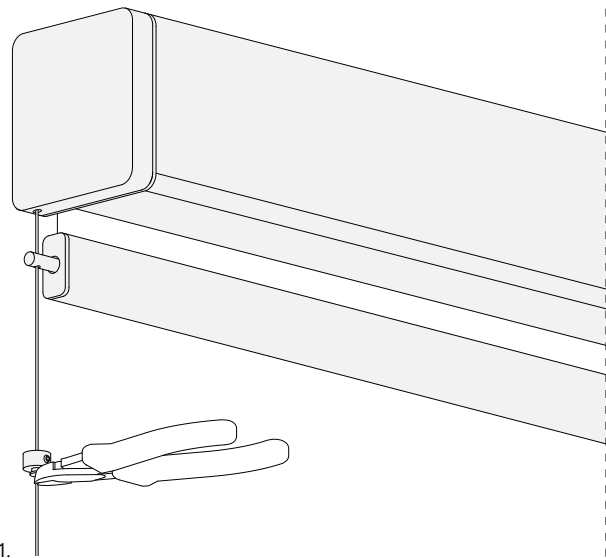
4.
In case of wall mounting, click in the stability block. Please make sure
that you hear a 'click', as it indicates that the clip is securely fastened.

For correct installation, ensure that all of the clips on the cassette
click on to the mounting rail.

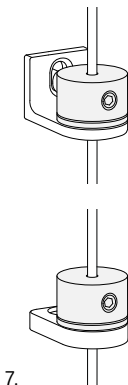
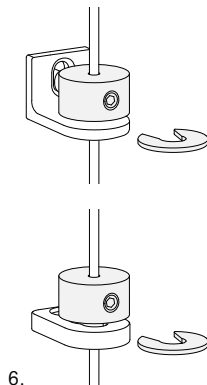
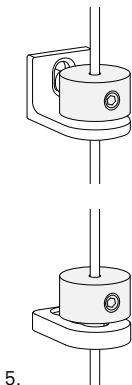
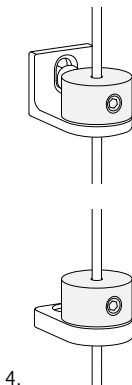
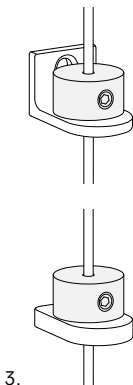
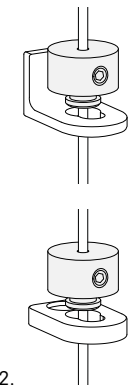
Installation Cable side guide



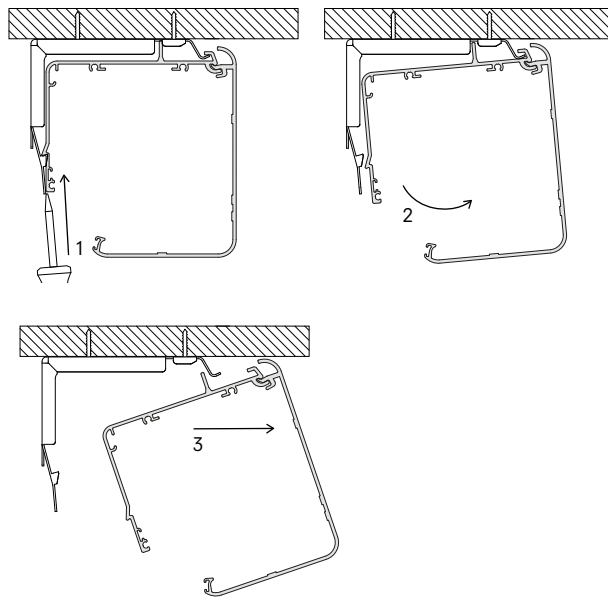
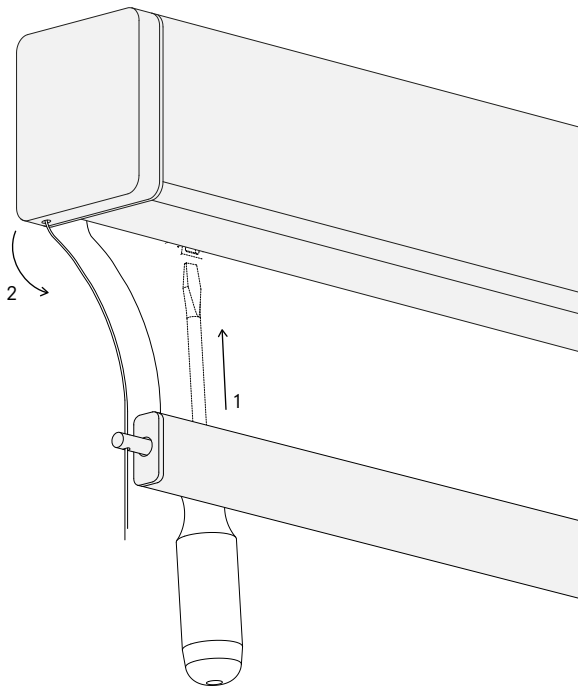
5.
String the cable through the cable fixator and the floor or wall- cable bracket. Mount the floor or wall- cable bracket at the desired position. Keep a distance of 4 mm between the fixator and the bracket and tighten the screw of the cable fixator. This distance is important for a save cable tension



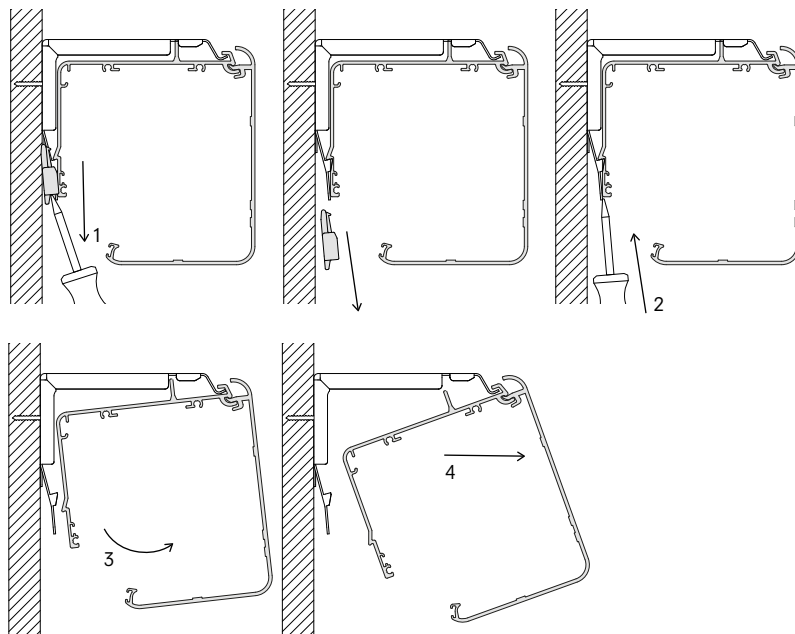
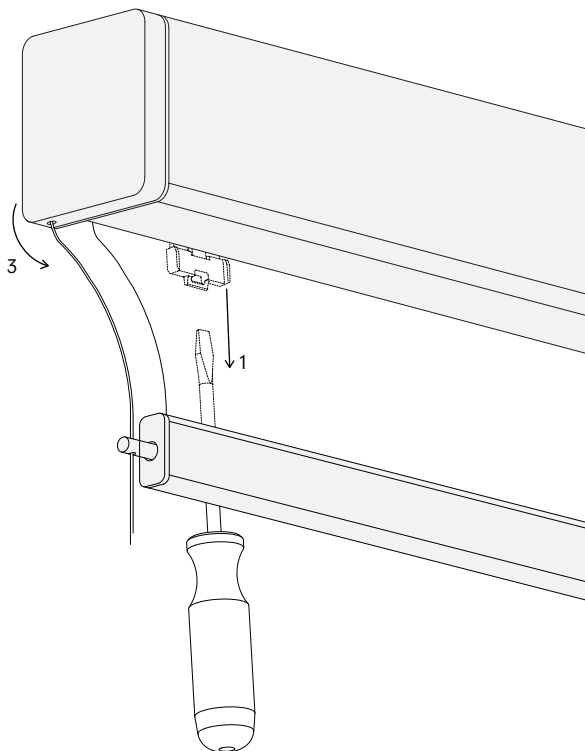
- 1. cut the cable.
- 2. click the fixator in the bracket
- 3. slide the fixator to the front
- 4. and up to the position in step 5
- 6. attach the safety plate between the bracket and the fixator
- 7. ready for use



Removal



6.
To remove the cassette from the mounting rail, place a screwdriver between the bracket and the cassette. Twist the screwdriver lightly until the cassette comes loose from the bracket.



7.
In case of wall mounting, make sure to remove the stability block with a screwdriver before removing the cassette.

