

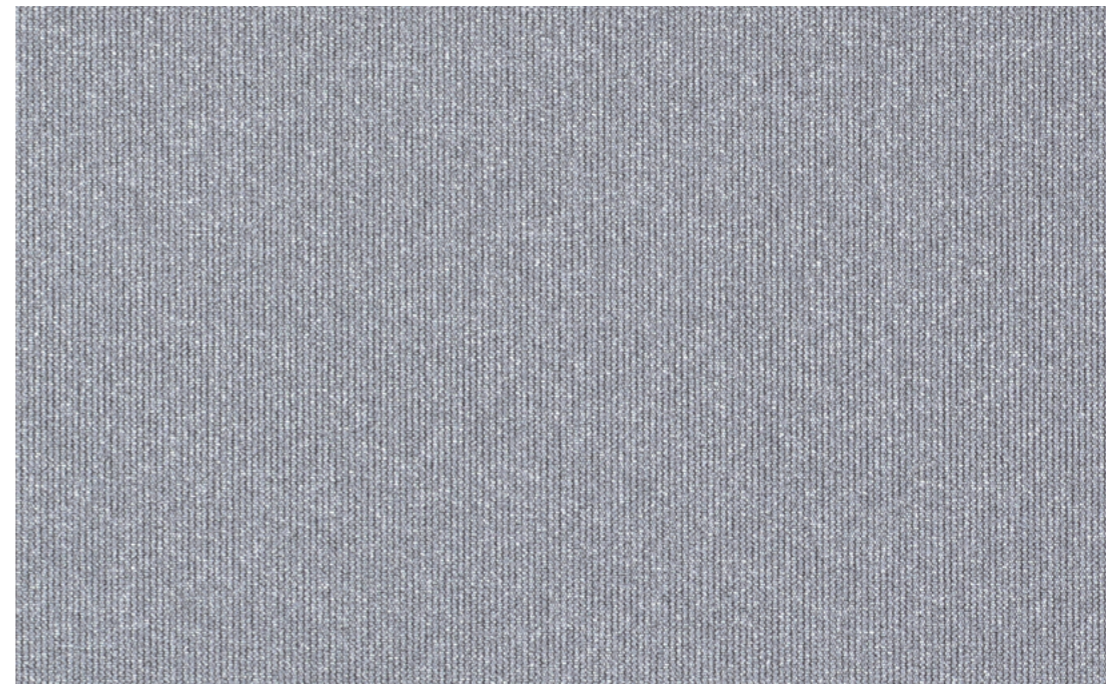


203 SilverScreen 3%

Outstanding view and performance

- 82% solar reflectance
- Savings in heating and cooling
- Clear view through and robust look and feel
- Phthalate free screens
- Flame retardant: B-s2, d0 (EN 13501-1)

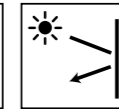
Nr. 122039000002109/Verosol



kvadrat verosol



Management System
ISO 9001:2015
ISO 14001:2015
www.tuv.com
ID: 9186621700



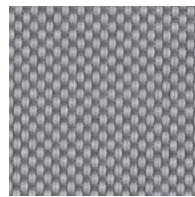
www.kvadratverosol.nl

Transparencies

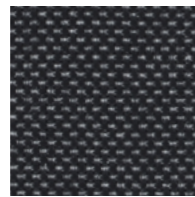


203 3% OF

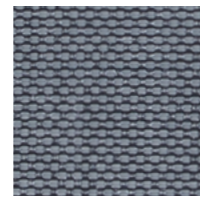
Colours



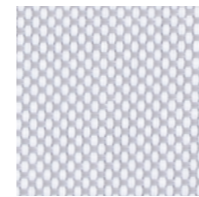
Steel Grey
FC02 (022)



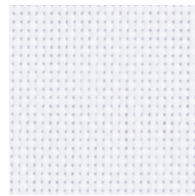
Black
FB01 (011)



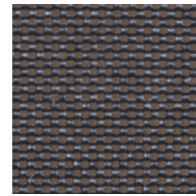
Dark Grey
FB02 (012)



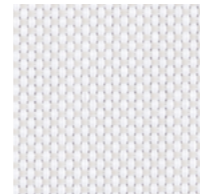
Light Grey
FD03 (033)



White
FD01 (031)



Brown
FB03 (013)



Beige
FD02 (032)

Specifications 203 SilverScreen 3%

	Openness factor	3%
	Thickness (mm)	0.58
	Weight (g/m ²)	450
	Width (cm)	280 max.
	Composition	75% PVC / 25% PET
	IR emissivity (metal side)	0.05
	Flame retardant standards	EN 13501-1 B-s2,d0, DIN 4102 B1, NFP 92503 M2, BS 5867 part 2 type B, NFPA 701
	Environmental standards	STANDARD 100 Class IV by OEKO-TEX®, HPD2.1, RoHS2, REACH, GreenGuard (LEED), GreenGuard Gold, Formaldehyde free, Phthalate free

	White	Black	
	Solar reflectance outside	82%	82%
	Light transmission	4%	3%
	Visual contact according to EN 14501:2021	2	2
	Glare control rating according to EN 14501:2021	4'	4'

	Solar control double glass (Glazing G EN14501:2021)			Insulating double glass (Glazing F EN14501:2021)			
	Glazing performance	White	Black	Glazing performance	White	Black	
	Light Transmission LT value	70%	3%	3%	82%	4%	3%
	Solar heat gain g-value / SHGC	33%	10%	10%	65%	22%	21%
	Insulation U-value (W/m ² K)	1.0	0.66	0.66	1.1	0.69	0.69
	Solar control triple glass (Glazing I)			Insulating triple glass (Glazing H EN14501:2021)			
	Glazing performance	White	Black	Glazing performance	White	Black	
	Light Transmission LT value	64%	3%	3%	74%	4%	3%
	Solar heat gain g-value / SHGC	31%	11%	11%	53%	21%	21%
	Insulation U-value (W/m ² K)	0.6	0.46	0.46	0.7	0.52	0.52

Optical properties are measured according to EN 14500, ISO 9050, ASTM C1371 & EN 410. For more information about technical data, energy savings and worldwide distribution, refer to www.kvadratverosol.nl. Disclaimer: The technical data is based on average data and is subject to production tolerances. Subject to misprints, errors and technical modifications. All technical details per colour available upon request.
*Cut off angle ≤65°, so upgrade with 1 class according to EN14501:2021.

The colours shown may vary from the supplied fabric due to batch variation in the production process. Please visit www.kvadratverosol.nl to order samples of your choice.